

Water Quality Model Updates and Special Studies

M. Anderson
Environmental Sciences
UC Riverside

1. Modeling

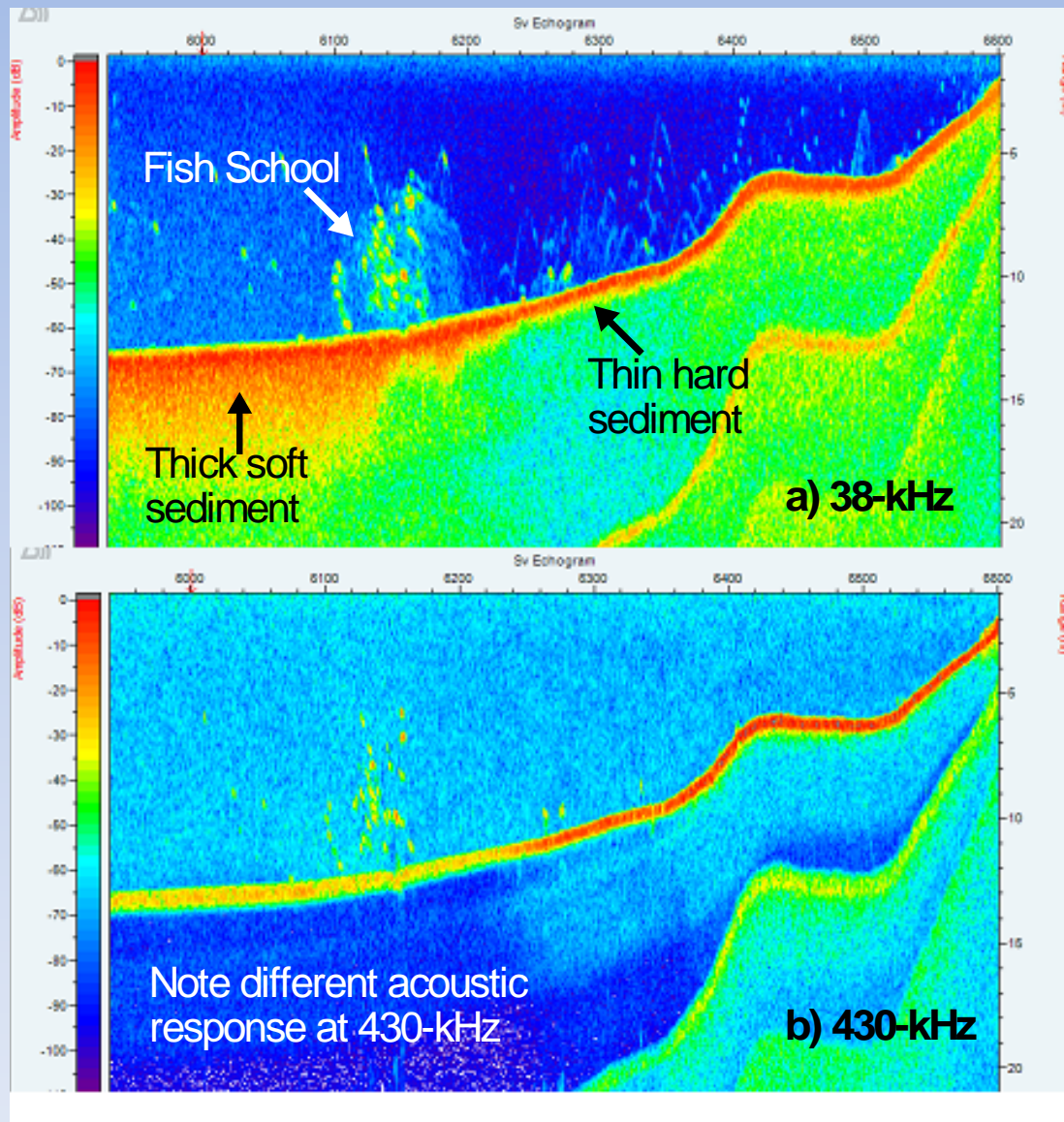
- Additional modeling is proposed to address a number of questions pertinent to the Lake Elsinore TMDL, goals and possible revision
- Additional 1-D hydrodynamic-water quality simulations will be conducted using DYRESM-CAEDYM
- Of particular note, CAEDYM has been updated to include sediment diagenesis, thereby allowing long-term simulations and influence of time on sediment quality and rates of internal nutrient recycling

- Key questions that will be addressed include:
 - What are naturally occurring fluctuations in nutrients-algae-DO-TDS in Lake Elsinore in an undeveloped watershed
 - How do salinity and other variables affect foodweb (e.g., zooplankton and fish species and effectiveness of top-down control of algae)
 - What are impacts of the various lake management efforts that have been implemented to date:
 - LEMP
 - Aeration/mixing
 - Lake level stabilization with recycled water
 - Fishery management
 - What opportunities exist for further improvements
 - Microfloc alum treatment of RW inflow or lake alum application

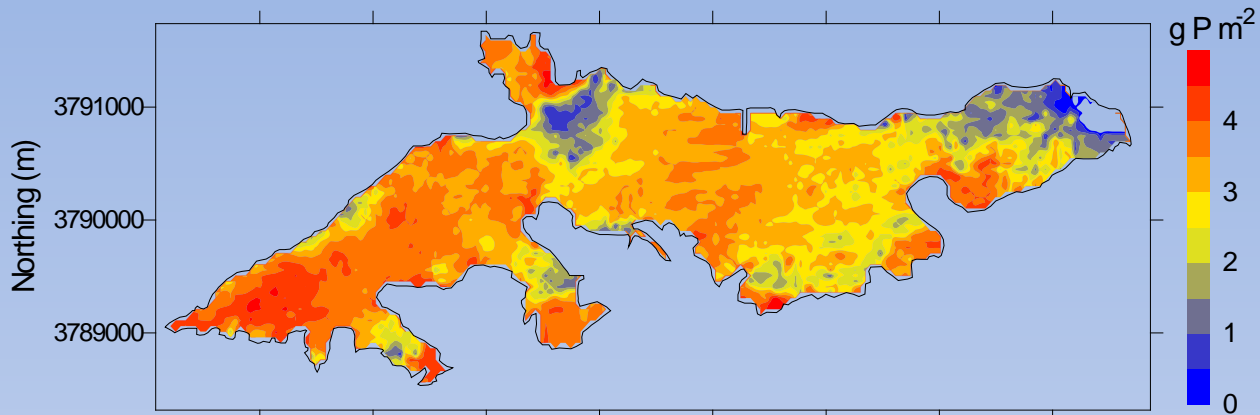
2. Special Studies

- Lake Elsinore
 - Stable isotope study to quantify:
 - persistence of N and P in labile forms, number of “trips” to water column before permanently sequestered
 - “fingerprinting” of N and P in recycled water and in water column/sediments to estimate persistence/fate
 - Fishery hydroacoustic survey to track fish populations by size class (and infer species to the extent possible based upon habitat use, DFG electrofishing survey, and/or gill netting)
 - Determine mobile-P content in sediments and use acoustic signature to develop maps, alum dose

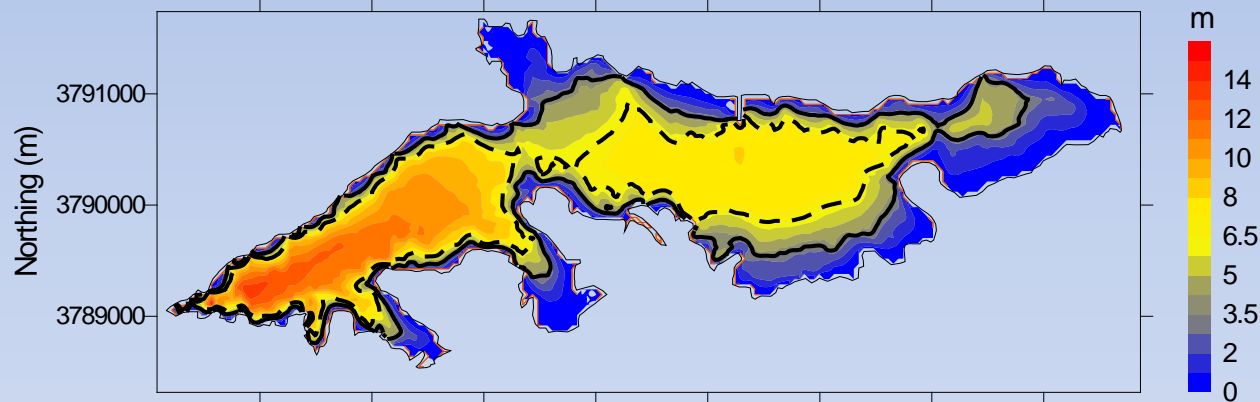
- Acoustic signature of bottom sediments contains valuable info



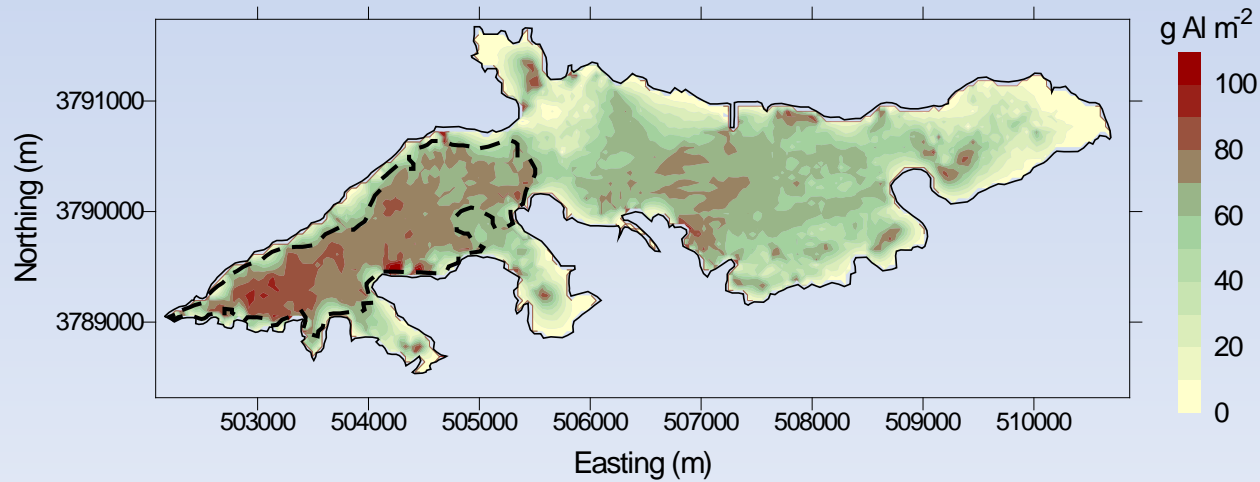
Mobile-P



Wave-zone



Alum dose



- Canyon Lake

- Measurement of internal nutrient loading rates for comparison with prior (pre-alum) studies
- Determination of mobile-P and Al-P in surface grab samples and cores to assess conversion of mobile-P to immobile-P (bound as Al-P to floc)
- Hydroacoustic survey of all 3 basins of Canyon Lake
 - determine sediment thickness
 - map mobile-P contents, etc.
 - fishery/zooplankton survey
 - improve modeling, water budget calculations, update elevation-storage data for lake

Budget

• Lake Elsinore studies, reports:	\$96K
• Canyon Lake studies, reports:	<u>\$26K</u>
Total	\$121K

Work conducted through research agreement with UCR similar to Biological Monitoring and other studies.