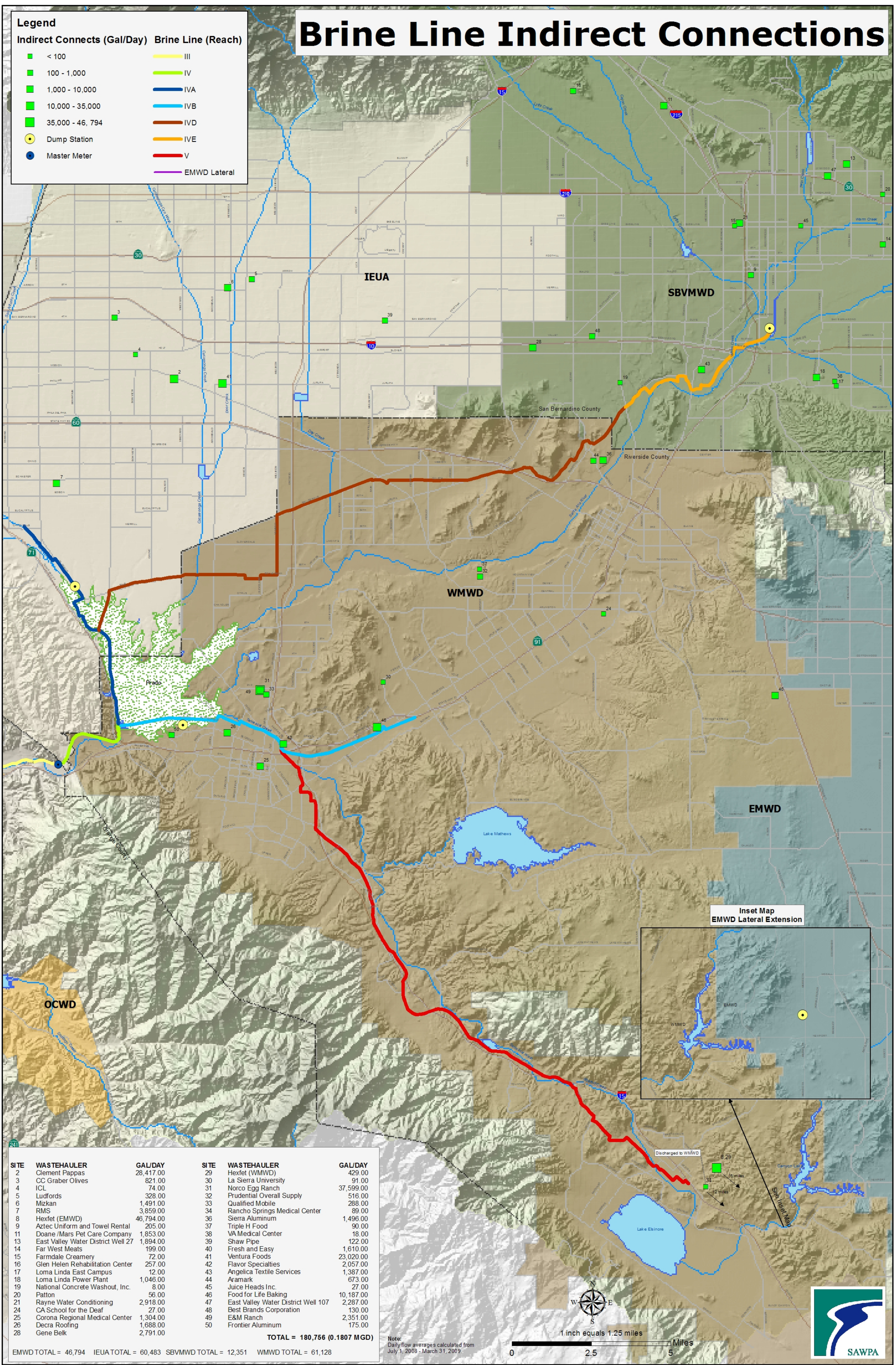


# Brine Line Indirect Connections

Legend	
Indirect Connects (Gal/Day)	Brine Line (Reach)
<span style="color: green;">■</span> < 100	<span style="color: yellow;">—</span> III
<span style="color: green;">■</span> 100 - 1,000	<span style="color: lightgreen;">—</span> IV
<span style="color: green;">■</span> 1,000 - 10,000	<span style="color: blue;">—</span> IVA
<span style="color: green;">■</span> 10,000 - 35,000	<span style="color: cyan;">—</span> IVB
<span style="color: green;">■</span> 35,000 - 46,794	<span style="color: brown;">—</span> IVD
<span style="color: yellow;">●</span> Dump Station	<span style="color: orange;">—</span> IVE
<span style="color: blue;">●</span> Master Meter	<span style="color: red;">—</span> V
	<span style="color: purple;">—</span> EMWD Lateral



SITE	WASTEHAULER	GAL/DAY	SITE	WASTEHAULER	GAL/DAY
2	Clement Pappas	28,417.00	29	Hexfet (WMWD)	429.00
3	CC Graber Olives	821.00	30	La Sierra University	91.00
4	ICL	74.00	31	Norco Egg Ranch	37,599.00
5	Ludfords	328.00	32	Prudential Overall Supply	516.00
6	Mizkan	1,491.00	33	Qualified Mobile	288.00
7	RMS	3,859.00	34	Rancho Springs Medical Center	89.00
8	Hexfet (EMWD)	46,794.00	36	Sierra Aluminum	1,496.00
9	Aztec Uniform and Towel Rental	205.00	37	Triple H Food	90.00
11	Doane /Mars Pet Care Company	1,853.00	38	VA Medical Center	18.00
13	East Valley Water District Well 27	1,894.00	39	Shaw Pipe	122.00
14	Far West Meats	199.00	40	Fresh and Easy	1,610.00
15	Farmdale Creamery	72.00	41	Ventura Foods	23,020.00
16	Glen Helen Rehabilitation Center	257.00	42	Flavor Specialties	2,057.00
17	Loma Linda East Campus	12.00	43	Angelica Textile Services	1,387.00
18	Loma Linda Power Plant	1,046.00	44	Aramark	673.00
19	National Concrete Washout, Inc.	8.00	45	Juice Heads Inc.	27.00
20	Patton	56.00	46	Food for Life Baking	10,187.00
21	Rayne Water Conditioning	2,918.00	47	East Valley Water District Well 107	2,287.00
24	CA School for the Deaf	27.00	48	Best Brands Corporation	130.00
25	Corona Regional Medical Center	1,304.00	49	E&M Ranch	2,351.00
26	Decra Roofing	1,688.00	50	Frontier Aluminum	175.00
28	Gene Belk	2,791.00			
		<b>TOTAL = 180,756 (0.1807 MGD)</b>			

EMWD TOTAL = 46,794 IEUA TOTAL = 60,483 SBVMWD TOTAL = 12,351 WMWD TOTAL = 61,128

Note: Daily flow averages calculated from July 1, 2008 - March 31, 2009.

