



# S A W P A

SANTA ANA WATERSHED PROJECT AUTHORITY  
11615 Sterling Avenue, Riverside, California 92503 • (951) 354-4220

## COMMISSION WORKSHOP/MEETING TUESDAY, NOVEMBER 1, 2011 – 9:30 A.M.

### AGENDA

1. CALL TO ORDER/PLEDGE OF ALLEGIANCE (Terry Catlin, Chair)
2. PUBLIC COMMENTS

Members of the public may address the Commission on any item that is within the jurisdiction of the Commission; however, no action may be taken on any item not appearing on the agenda unless the action is otherwise authorized by Subdivision (b) Section 54954.2 of the Government Code.

3. NEW BUSINESS

- A. INLAND EMPIRE BRINE LINE REACH V - TEMESCAL CANYON ROAD AT CABOT ROAD SANITARY SEWER OVERFLOW (CM#8548).....3

**Presenter:** David Ruhl

**Recommendation:**

1. Receive and file this Status Report;
2. Adopt Resolution No. 2011-14, recognizing the emergency status of the Temescal Canyon Road at Cabot Road sanitary sewer overflow (SSO), and granting the General Manager the authority to resolve such emergency (retroactive to 10-18-11);
3. Retroactively authorize the General Manager to issue task/work orders to contractors and consultants to be determined, for an amount to be determined, to contain the spill and make repairs due to the damage caused by the SSO (retroactive to 10-18-11); and
4. Direct staff to pay all expenses from the Brine Line Self-Insurance Fund, to file a claim with SAWPA's insurance carriers, and to deposit any insurance payments received into the Self-Insurance Fund.

4. WORKSHOP DISCUSSION AGENDA

- A. SOUTHERN CALIFORNIA SALINITY MANAGEMENT PLAN UPDATE - A Partnership between Metropolitan Water District of Southern California, Bureau of Reclamation, and Southern California Salinity Coalition

**Presenter:** Mark Norton

**Recommendation:** Receive and file.

- B. IEUA'S AUTOMATIC WATER SOFTENER ORDINANCE

**Presenter:** Tom Love, IEUA

**Recommendation:** Discussion and possible action.

## 5. CONSENT CALENDAR

All matters listed under the Consent Calendar are considered to be routine and non-controversial and will be acted upon by the Committee by one motion in the form listed below. There will be no separate discussion on these items prior to the time the Committee votes, unless any Committee members, staff, or the public requests specific items be discussed and/or removed from the Consent Calendar for separate action.

### A. APPROVAL OF THE MINUTES FROM THE MEETING HELD 10-18-11.....11

**Recommendation:** Approve as mailed.

## 6. ADJOURNMENT


Any person with a disability who requires accommodation in order to participate in this meeting should telephone Commission Secretary Patti Bonawitz at (951) 354-4230, at least 48 hours prior to the meeting in order to make a request for a disability-related modification or accommodation.

### **PLEASE NOTE:**

Materials related to an item on this agenda submitted to the Commission after distribution of the agenda packet are available for public inspection in the Authority's office located at 11615 Sterling Avenue, Riverside, during normal business hours. Also, such documents are available on the Authority's Website at [www.sawpa.org](http://www.sawpa.org), subject to staff's ability to post documents before the meeting.

### Declaration of Posting

I, Patti Bonawitz, Clerk of the Board of the Santa Ana Watershed Project Authority certify that a copy of this agenda has been posted in the Agency's office at 11615 Sterling Avenue, Riverside, California by 5:30 p.m. on Wednesday, October 26, 2011.

  
Patti Bonawitz

## 2011 - Upcoming Meetings/Events

(NOTE: All Commission workshops/meetings begin at **9:30 a.m.**, unless otherwise noted)

### November

11-1-11	Commission Workshop
11-15-11	Commission Meeting
11-29-11	ACWA Fall Conference - Anaheim

### December

12-6-11	Commission Workshop/Meeting
---------	-----------------------------

2012 OWOW CONFERENCE – **APRIL 25, 2012**  
NATIONAL ORANGE SHOW – SAN BERNARDINO

## COMMISSION MEMORANDUM NO. 8548

**DATE:** November 1, 2011

**TO:** SAWPA Commission

**SUBJECT:** Inland Empire Brine Line Reach V Pipeline Failure - Temescal Canyon Road at Cabot Road

**PREPARED BY:** David Ruhl, Program Manager

### RECOMMENDATION

It is recommended that the Commission:

1. Receive and file this Status Report;
2. Adopt Resolution No. 2011-14, recognizing the emergency status of the Temescal Canyon Road at Cabot Road sanitary sewer overflow (SSO) and granting the General Manager the authority to resolve such emergency (retroactive to 10-18-11);
3. Retroactively authorize the General Manager to issue task/work orders to contractors and consultants to be determined, for an amount to be determined, to contain the spill and make repairs due to the damage caused by the SSO (retroactive to 10-18-11); and
4. Direct staff to pay all expenses from the Brine Line Self-Insurance Fund, to file a claim with SAWPA's insurance carriers, and to deposit any insurance payments received into the Self-Insurance Fund.

### DISCUSSION

On October 18, 2011, SAWPA staff was notified of a SSO on Temescal Canyon Road and Cabot Road in the City of Corona (see attached maps). Upon staff arrival at the SSO location, it was determined and verified that the SSO was from the Inland Empire Brine Line Reach V. Staff immediately notified the upstream dischargers to cease discharge, made the proper notifications, contained the spill, and then began clean-up and repair activities. The spill was contained on the afternoon of October 18. Brine was removed from the pipeline to allow repairs during the afternoon and evening of October 18. Repairs to the Brine Line began the morning of October 19, and street repairs began on October 21. The pipe was repaired in the early morning of October 21. Partial flow was restored to the Brine Line at approximately 10:15 a.m. on October 21. Repairs to the asphalt pavement and median are ongoing and estimated to be completed by early November.

The SSO created an emergency situation because discharges of waste create potential liability under Federal and State water quality laws, and that liability can grow with increasing duration and volume of a discharge. In addition, the discharge created an immediate risk of damage to the property of others, including a roadway hazard.

**Immediate Impacts:** Approximately 310,000 gallons of high salinity brine spilled from the Brine Line. Approximately 113,000 gallons were recovered and disposed of back into the Brine Line at a location downstream of the spill, and approximately 197,000 gallons were not recovered and entered into the storm drain. The storm drain is tributary to Temescal Wash. It is estimated that the brine traveled to Hahn Lake (along Temescal Wash) and is contained. Brine flowing from the failure location lifted the asphalt pavement in the vicinity of the rupture and in the northerly edges of the north and south bound lanes of Temescal Canyon Road.

**Cause of Spill:** The existing 24" pipe failed at the intersection of Temescal Canyon Road at Cabot Road in the street median on the north side of Cabot Road. The failure location is about 17 feet below the surface of the existing street. The failure was observed to be a gasket that was displaced at the joint and a hairline crack along the bottom of the pipe. CCTV of the pipeline in the upstream and downstream locations verified the hairline crack. In addition, the pipe is "out of round" or slightly oval. It is unclear at this time if the oval shape of the pipe contributed to the pipe failure. Further investigation is on-going.

**Environmental Damage Assessment:** A biological survey of the impacts caused by the spill is on-going and likely will continue for many months. Representatives of the California Regional Water Quality Control Board, and the California Department of Fish and Game were on site throughout the spill and repairs.

**Impacted Dischargers:**

- Inland Empire Energy Center (full flow restored afternoon of October 21).
- International Rectifier (EMWD Truck Dump Station. Truck dump station opened the morning of October 21; however, they discharged at the WMWD Truck Dump station during the EMWD shutdown).
- Perris and Menifee Desalters (not immediately impacted; EMWD temporarily discharged recycled water in-lieu of desalter concentrate. Recycled water discharge was restored on the morning of October 24. The desalters resumed operation on the morning of October 25).

**Contractors Obtained to Assist:**

- Caliagua (excavate pipe and repair).
- WEKA, Inc. (removed and replaced damaged asphalt and base).
- A-Cone Zone (traffic control).
- Haz-Mat Trans (tanker trucks and dewatering bins for soil and brine removal).
- John Byerly Inc. (testing, pavement analysis and inspection).
- Innerline Engineering, Inc. (CCTV).
- Tom Dodson and Associates (environmental damage assessment).

**Agency Support:**

- WMWD (spill recovery and excavation support, materials and equipment, general support for SAWPA staff and Contractors).
- EMWD (vacator support for spill recovery, pipe and fitting for repair).
- City of Corona (coordination of events within the City; provided spoil stockpile location, traffic control signs).
- Lee Lake Water District (provided spoil stockpile location).
- EVMWD (first on site; provided initial traffic control and safety).

**Emergency Status:** Additionally, pursuant to Section 22050 of the Public Contracts Code, the Commission is requested to adopt a resolution identifying the emergency status of the Temescal Canyon Road at Cabot Road SSO repair, and to grant the General Manager the authority to deal with such emergency. Specifically, the Resolution allows the General Manager to repair the pipe and take any directly related and immediate actions required, and procure the necessary equipment, services, and supplies for that purpose, without giving notice for bids to let contracts. The Public Contract Code requires that the Commission review the emergency action at its next regularly scheduled meeting until the emergency is resolved, and determine if there is a need to continue the action. It is anticipated that all work will be complete by the November 15 Commission meeting.

**Insurance:** SAWPA holds property insurance and pollution liability insurance policies and has notified its insurance carriers of the pipeline failure and resulting SSO.

### **RESOURCE IMPACTS**

Funds are not budgeted to cover the emergency response to the Reach V Brine Line SSO. Funds from the Brine Line Self-Insurance Fund will be used to make payments. Any payments received from insurance policies will be returned to the Self-Insurance Fund.

DR:pb

Attachments:

1. Project Area Maps
2. Resolution No. 2011-14

CM#8548 Temescal Canyon Cabot Spill 11-1-11



# Brine Line SSO - Key Map

2 of 2

- Streams
- SSO Location
- Brine Line

1 of 2



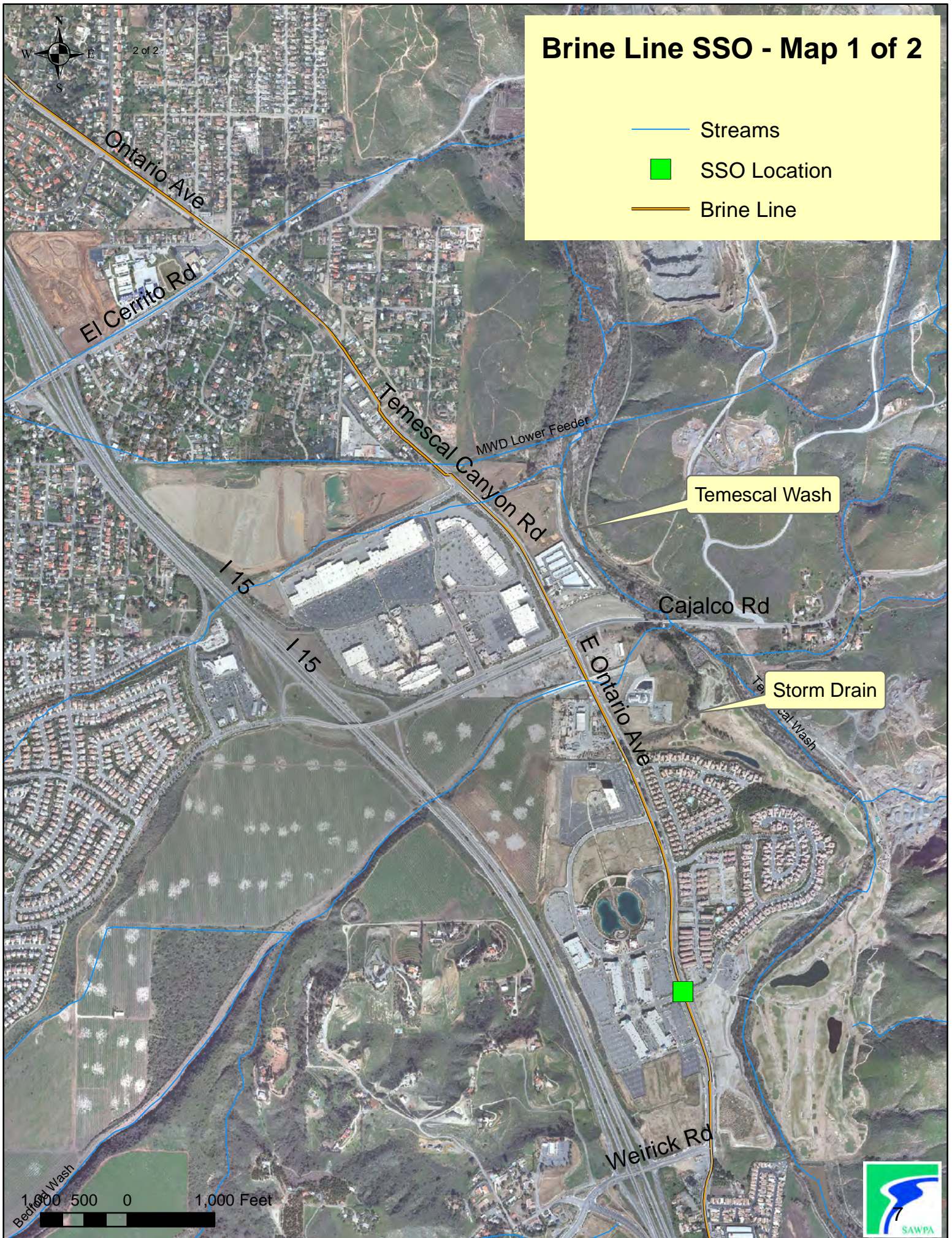
3,000 1,500 3,000 Feet





# Brine Line SSO - Map 1 of 2

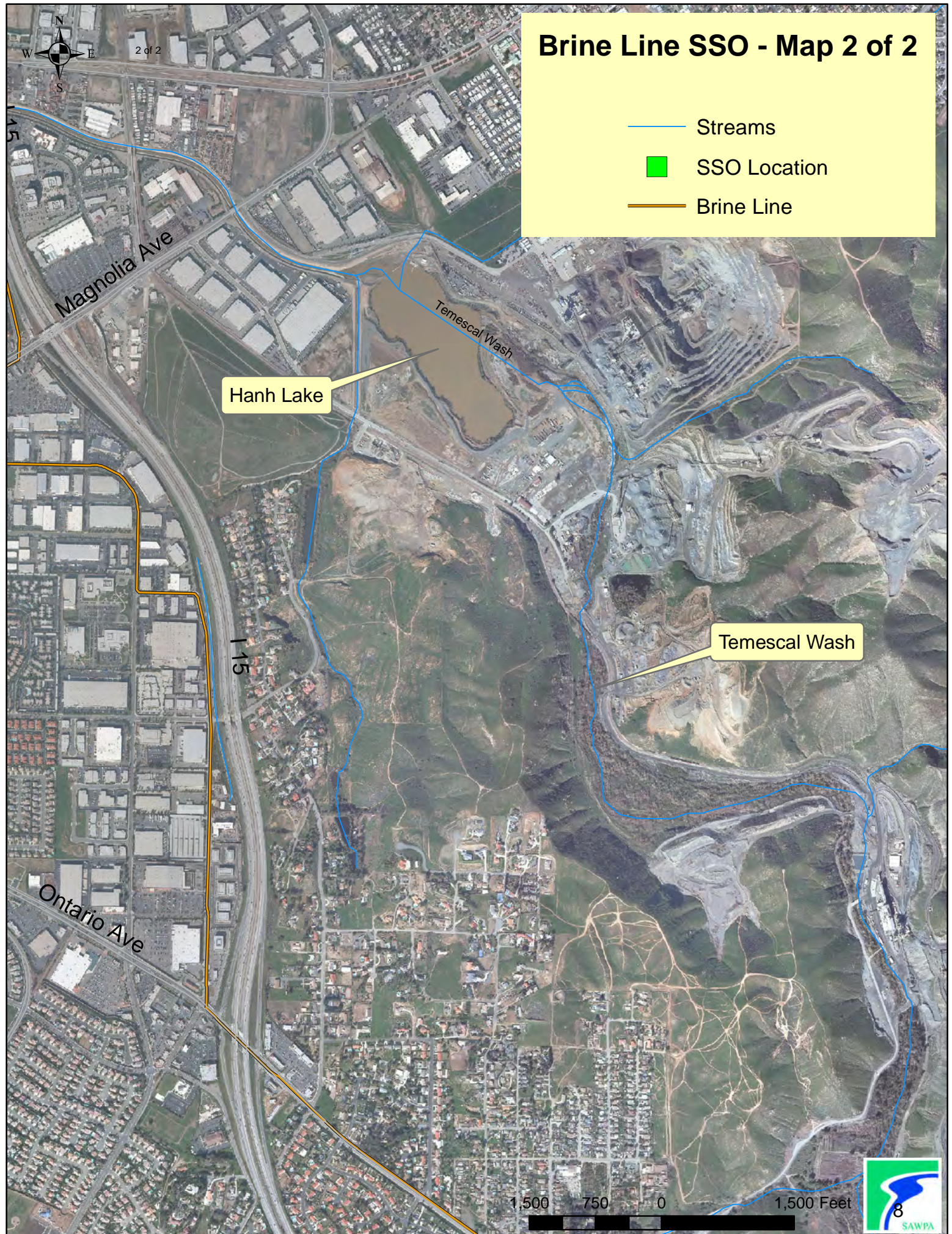
- Streams
- SSO Location
- Brine Line





## Brine Line SSO - Map 2 of 2

- Streams
- SSO Location
- Brine Line





## **RESOLUTION NO. 2011-14**

### **A RESOLUTION OF THE COMMISSION OF THE SANTA ANA WATERSHED PROJECT AUTHORITY RECOGNIZING THE EMERGENCY STATUS OF THE TEMESCAL CANYON ROAD AT CABOT ROAD SANITARY SEWER OVERFLOW (SSO) AND GRANTING THE GENERAL MANAGER THE AUTHORITY TO RESOLVE SUCH EMERGENCY**

**WHEREAS**, a SSO was reported on October 18, 2011 on the Inland Empire Brine Line Reach V;

**WHEREAS**, the SSO was caused by a failure of the Reach V pipeline at the intersection of Temescal Canyon Road and Cabot Road in the City of Corona;

**WHEREAS**, brine from the Reach V pipe failure was spilling onto the public right-of-way and into the storm drain and drainage system for Temescal Wash;

**WHEREAS**, the pipe failure caused damage to the public roadway impacting the safety of the general public;

**WHEREAS**, this section of the Brine Line receives brine from the Inland Empire Energy Center, an 800 megawatt power plant that provides energy to the region and the Perris and Menifee Desalters; potable water sources for Eastern Municipal Water District;

**WHEREAS**, the Inland Empire Energy Center, Perris and Menifee Desalters need to be in continuous production to provide adequate power and water supplies to the region;

**WHEREAS**, an emergency is defined in Section 1102 of the Public Contracts Code as “a sudden, unexpected occurrence that poses a clear and imminent danger, requiring action to prevent or mitigate the loss or impairment of life, health, property, or essential public service.”

**WHEREAS**, SAWPA’s Procurement Policy, Section 3.6, provides guidance for procurement of services under emergency situations;

**WHEREAS**, Section 22050 of the California Public Contract Code requires that the SAWPA Commission make a finding that the emergency condition will not permit a delay resulting from a competitive solicitation for bids, and that the action is necessary to respond to the emergency; and

**WHEREAS**, there is an immediate need to contain the SSO and repair the Reach V pipe to protect the general public, habitat, water resources, provide an adequate water supply and power supply, and ensure a reliable disposal system for the Perris and Menifee Desalters and the Inland Empire Energy Center.

**NOW, THEREFORE, BE IT RESOLVED** that the Commission of the Santa Ana Watershed Project Authority, pursuant to Section 22050 of the California Public Contract Code, hereby resolves that:

1. The pipeline failure and resulting SSO at Temescal Canyon Road and Cabot Road is consistent with the definition of an emergency condition and requires immediate repair.

2. The General Manager has the authority to spend up to \$300,000 on measures needed to respond to the emergency situation of Reach V of the Inland Empire Brine Line.
3. The General Manager shall take any directly related and immediate action required by the emergency, and procure the necessary equipment, services, and supplies for this purpose without giving notice for bids to award contracts.
4. This authorization is effective retroactive to October 18, 2011.

**ADOPTED THIS** 1<sup>st</sup> day of November, 2011.

**SANTA ANA WATERSHED PROJECT AUTHORITY**

BY: \_\_\_\_\_  
Terry Catlin, Chair



# **SAWPA Commission**

## **Meeting Minutes**

**October 18, 2011**

### **COMMISSION MEMBERS PRESENT**

Terry Catlin, Chair  
Denis Bilodeau  
Don Galleano  
Ron Sullivan  
George Aguilar

### **REPRESENTING**

Inland Empire Utilities Agency  
Orange County Water District  
Western Municipal Water District  
Eastern Municipal Water District  
San Bernardino Valley MWD

### **OTHERS PRESENT**

Angel Santiago  
Craig Miller  
Mike Markus  
Jeff Sims  
Don Lee  
Celeste Cantú  
Larry McKenney  
Rich Haller  
David Ruhl  
Carlos Quintero  
Dean Unger  
Karen Williams  
Jeff Beehler  
Patti Bonawitz

Inland Empire Utilities Agency  
Inland Empire Utilities Agency  
Orange County Water District  
Western Municipal Water District  
Tetra Tech  
SAWPA, General Manager  
SAWPA, Executive Counsel  
SAWPA, Executive Manager of Engineering & Operations  
SAWPA, Program Manager  
SAWPA, Project Manager  
SAWPA, Manager of Information Services & Technology  
SAWPA, Chief Financial Officer  
SAWPA, Program Manager  
SAWPA, Clerk of the Board

The Commission Meeting of the Santa Ana Watershed Project Authority was called to order at 9:35 a.m. by Chair Terry Catlin at the Santa Ana Watershed Project Authority Office, 11615 Sterling Avenue, Riverside, CA 92503. A quorum was present (Catlin, Galleano, Sullivan, and Aguilar). No public comments were received.

### **SPECIAL PRESENTATIONS**

#### **SARI GROUNDBREAKING – OCTOBER 11, 2011**

David Ruhl said that W.A. Rasic, the contractor for the SARI mainline relocation project in Orange County, was issued a “Notice to Proceed” last week. He then presented pictures of the SARI Relocation Project ground-breaking ceremony held Tuesday, October 11, 2011.

Commissioner Aguilar noted that OCSD’s Jim Ruth received CSDA’s “General Manager of the Year” Award.

#### **INLAND EMPIRE BRINE LINE REPAIRS TO UNLINED RCP, REACHES IV-A AND IV-B STATUS REPORT (CM#8540)**

David Ruhl presented a video clip of the progress made on the brine line repairs in Reaches IV-A and IV-B. The contractor has made significant progress on Reach IV-B and we’re at a safe elevation right now. As for last week’s rain, the U.S. Army Corps of Engineers was a tremendous help in keeping the project on track with little impacts to the project schedule. Celeste Cantú thanked OCWD for their help in keeping this project moving forward.

Alternate Commissioner Denis Bilodeau entered the meeting room at 9:40 a.m.

#### **OWOW UPDATE**

Jeff Beehler reported that there is good news in the DWR new schedule, although things are happening slower than anticipated. He highlighted some upcoming dates:

- Release of revised draft guidelines and PSP for public review and comment will be in January 2012, with applications due in spring 2012.
- Release of final Round 2 program guidelines and PSP for Stormwater management grants applications will be in the summer 2012, with applications due in the fall 2012.
- Full applications are due in summer 2013, with final award announcements by the Board in fall 2013. The OWOW Plan 2.0 should be ready to go for this round of funding.

SAWPA staff will attend a DWR kick-off meeting for SAWPA's Round 1 IRWM Planning Grant on Thursday, October 20.

## **NEW BUSINESS**

### **IMPAIRED WATER BODIES IN CALIFORNIA**

Celeste Cantú noted that increased monitoring finds more water pollution in California water bodies; she referenced materials attached in the packet. The EPA recently prepared a new list of impaired water bodies, and several habitats near the Brine Line in the Santa Ana River Watershed are listed. The report was received and filed.

### **COLA AND MERIT INCREASES – FY 2011/12 (CM#8548)**

Celeste Cantú reviewed staff's recommendation and referenced the "running total difference" from the lack of COLAs received over the past few years, and using a third-party metric (i.e., December to December CIP index) to keep SAWPA salaries at market.

Discussion ensued regarding the member agencies' COLA and merit increases and other options (i.e., pay for performance), as well as employees paying for the employees' share of PERS. Alternate Commissioner Bilodeau stated that he could support the COLA, but not the merit. Chair Catlin and Commissioners Galleano, Sullivan, and Aguilar supported staff receiving the COLA and the merit increase. Commissioner Aguilar commented that he knows how hard it is to keep good staff, and being competitive in the marketplace is important; he believes that SAWPA has good staff. Alternate Commissioner Bilodeau stated that SAWPA needs to make some progress in discussing employee-paid PERS. Commissioner Galleano commented that he thought it merited a discussion at a future time. Commissioner Aguilar suggested that a subcommittee be formed for further discussion. Discussion further ensued regarding the creation of a subcommittee with George Aguilar and Denis Bilodeau serving on that subcommittee. Alternate Commissioner Bilodeau stated that his comments were not a reflection on staff, but rather a sign of the times.

Upon motion by Commissioner Galleano, seconded by Commissioner Sullivan, and Alternate Commissioner Bilodeau voting in the negative, the motion carried 4-1:

**11-10-02**

**MOVED,** approval of a 1.34% COLA increase and a 5% merit increase pool for FY 2011/12.

### **STATE LEGISLATIVE REPORT (CM#8541)**

Discussion briefly ensued regarding the governor's vetoes and three key items: Delta Plan and Financing, 2012 Water Bond, and Public Goods Charge (SB34). Celeste Cantú stated that Michael Boccadoro will come back in November or December to lead a discussion on these key items.

## **OLD BUSINESS**

None



## **CONSENT CALENDAR**

Upon motion by Chair Catlin, seconded by Commissioner Aguilar, the motion unanimously carried:

**11-10-03**

**MOVED,** approval of the Consent Calendar.

- A. The Commission approved the Minutes from the meeting held on 10-4-11.
- B. The Commission received and filed the Treasurer's Report – September 2011.
- C. The Commission received and filed the disposal of surplus property (CM#8543).

## **INFORMATIONAL REPORTS**

The Commission received and filed the following oral/written reports/updates.

- A. Inter-Fund Borrowing - August 2011 (CM#8545)
- B. Performance Indicators and Financial Reporting – August 2011 (CM#8542)
- C. General Manager's Report
- D. Chair's Comments/Report
- E. Commissioners' Comments  
Commissioner Aguilar commented that he recently attended the CSDA Annual Conference. Their conference theme focused on the need for special districts to band together, as the legislature may be looking at the special districts' finances to help support some of the economic issues.

Chair Catlin called for a brief five-minute recess at 10:30 a.m. before convening into Closed Session.

Alternate Commissioner Bilodeau left the meeting room at 10:40 a.m.

## **CLOSED SESSION**

The Commission went into Closed Session at 10:40 a.m. pursuant to Government Code Section 54945.9(b) Conference with Legal Counsel – Anticipated Litigation – Significant Exposure to Litigation – One Potential Case. The Commission reconvened into Open Session at 10:59 a.m. Larry McKenney reported that the Commission took no reportable action.

There being no further business for review, Chair Catlin adjourned the meeting at 10:59 a.m.

**APPROVED:**  
**November 1, 2011**

\_\_\_\_\_  
Terry Catlin, Chair