


MSAR BACTERIA TMDL TASK FORCE: PROJECT UPDATE	CDM
	July 27, 2011


Presentation Outline	
<ul style="list-style-type: none">• Comprehensive Bacteria Reduction Plan - Overview• Watershed-wide Compliance Monitoring Program – Status Update• Source Evaluation Projects – Status Update<ul style="list-style-type: none">– 2011-2012 Activities– July 31 USEP Report	
CDM	

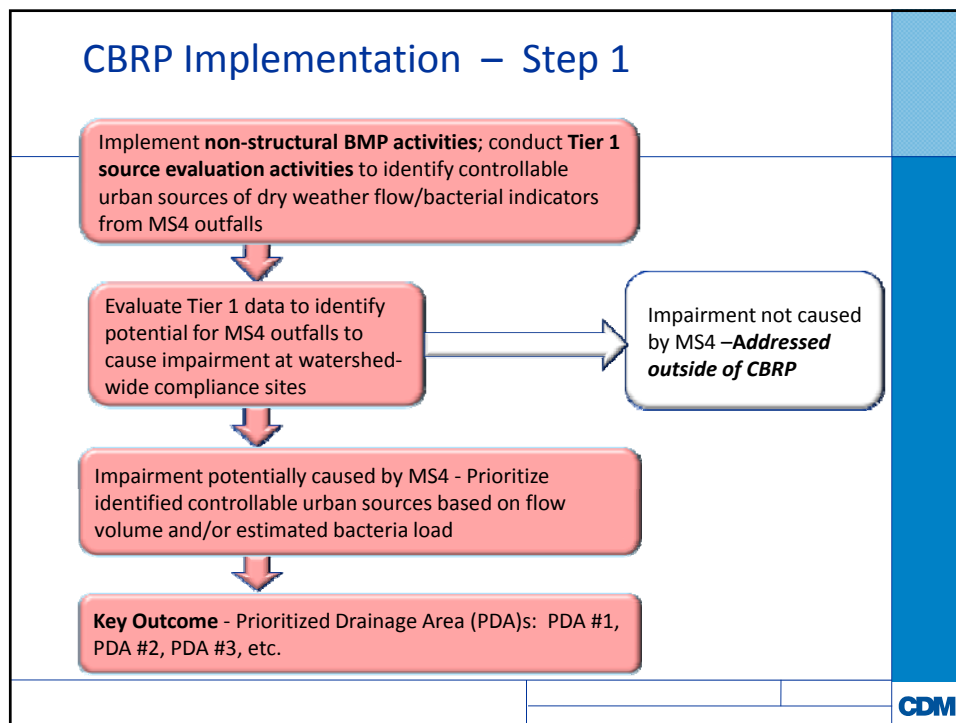
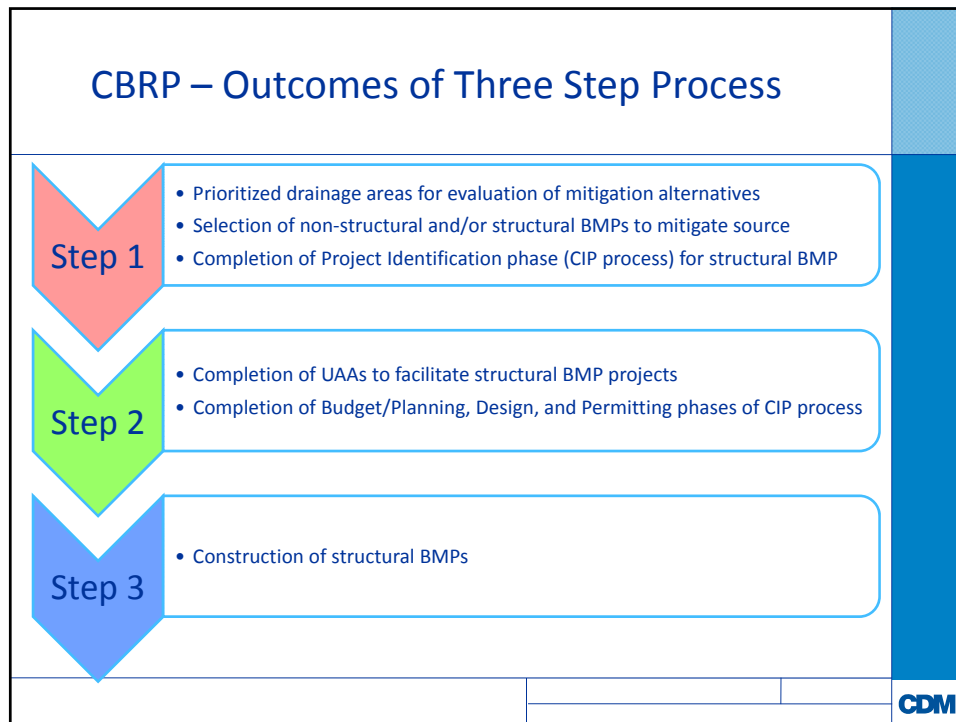
COMPREHENSIVE BACTERIA REDUCTION PLAN

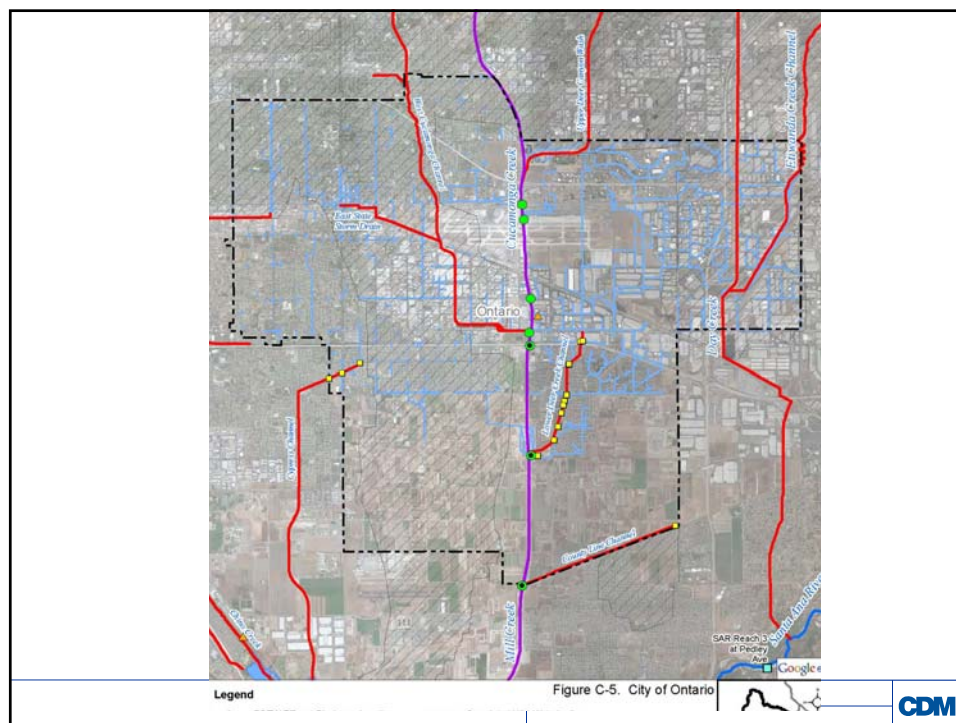
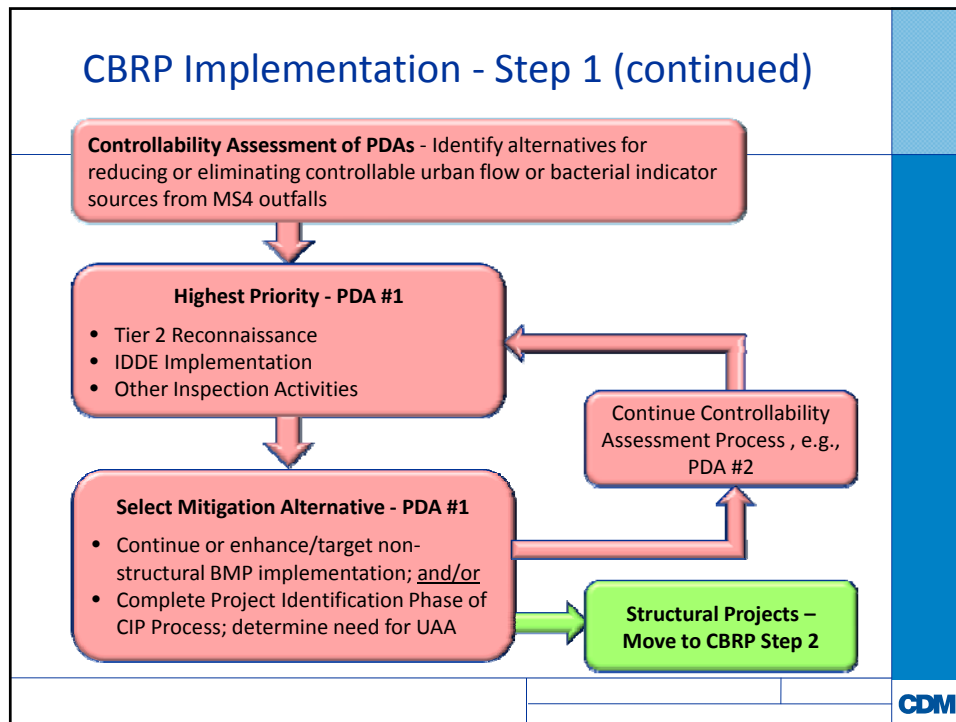
Comprehensive Bacteria Reduction Plan (CBRP) - Status

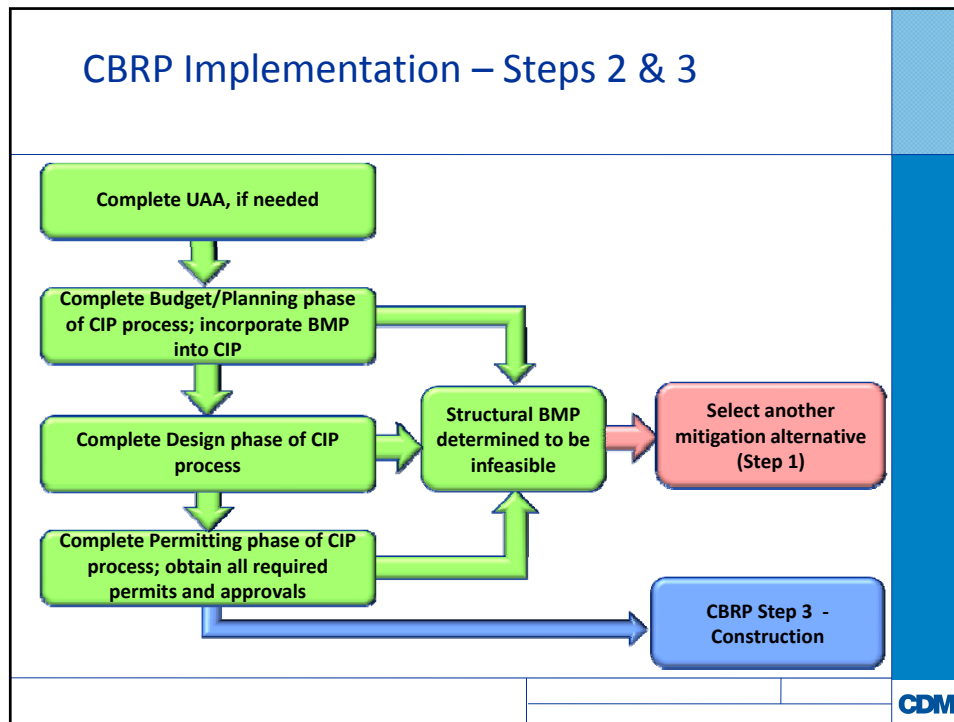
- Draft Submitted December 2010
- Regional Board Comments Received March 30, 2011
- Comment Discussion – Stormwater Quality Standards Task Force Meeting, April 21, 2011
- Riverside and San Bernardino County MS4 Programs Submitted Revised CBRPs June 28, 2011

CBRP Modifications	
<ul style="list-style-type: none">• Key Changes from Draft<ul style="list-style-type: none">• Clarified Understandings<ul style="list-style-type: none">» Role of watershed-wide compliance sites» Mitigation of controllable urban sources to the MEP» Linkage to the Stormwater Quality Standards Task Force• Clarified Progression/Relationship of Implementation Activities and Associated Schedule<ul style="list-style-type: none">» Refined source evaluation project activities» Incorporated linkage among source evaluation outcomes, selection of mitigation alternatives, and implementation of the CIP Process, where structural controls needed» Focused expectations for development of UAAs• Updated Compliance Analysis	

CBRP – Three Implementation Steps	
<ul style="list-style-type: none">• Step 1 – Identify, Prioritize, and Evaluate MS4 Dry Weather Flow Sources• Step 2 – Evaluate and Select Structural BMP Types• Step 3 – Construct Structural BMP Projects	







CBRP Schedule

CBRP Step	CBRP Element/Activities	Schedule
Step 1	Non-structural BMPs	Complete programmatic development by early 2014
Step 1	Tier 1 Evaluations	Complete by end of 2012
Step 1	Prioritization of Drainage Areas	Complete by end of 1 st quarter 2013
Step 1	Evaluate and Select Mitigation Alternatives	Complete in all PDAs by end of 1 st quarter 2015
Step 2	UAA Development and Implementation of CIP Phases for structural BMPs	Initiate by early 2014; continue until all identified structural BMPs ready for construction
Step 3	Construction of Approved Structural BMPs	Initiate by mid-2015 (where project clears CIP process in a timely manner); continue until all approved projects completed

CDM

CBRP – Next Steps

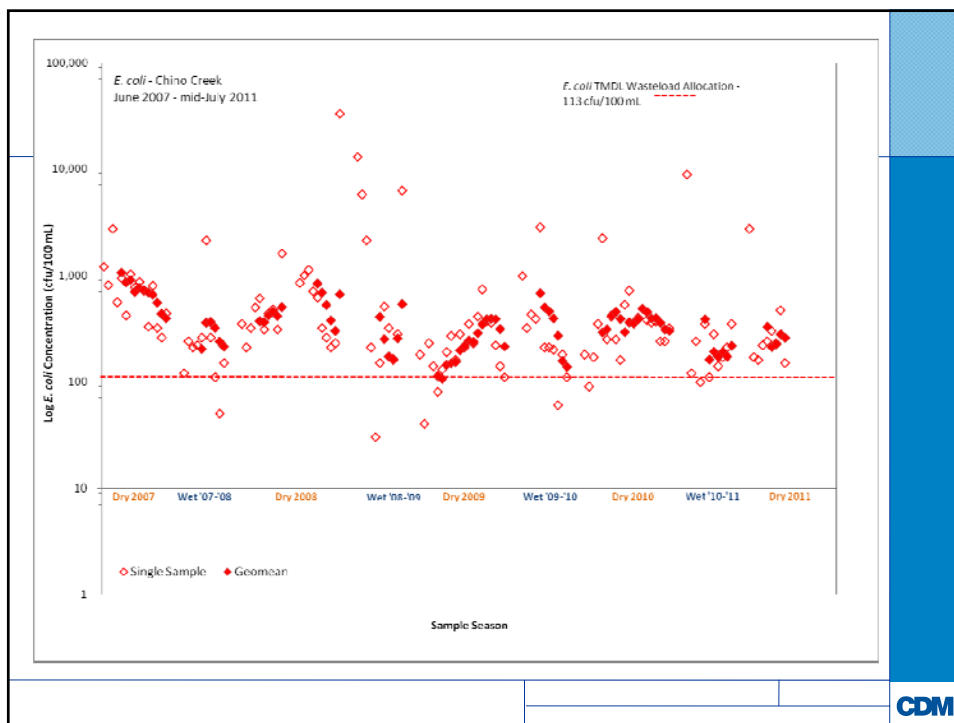
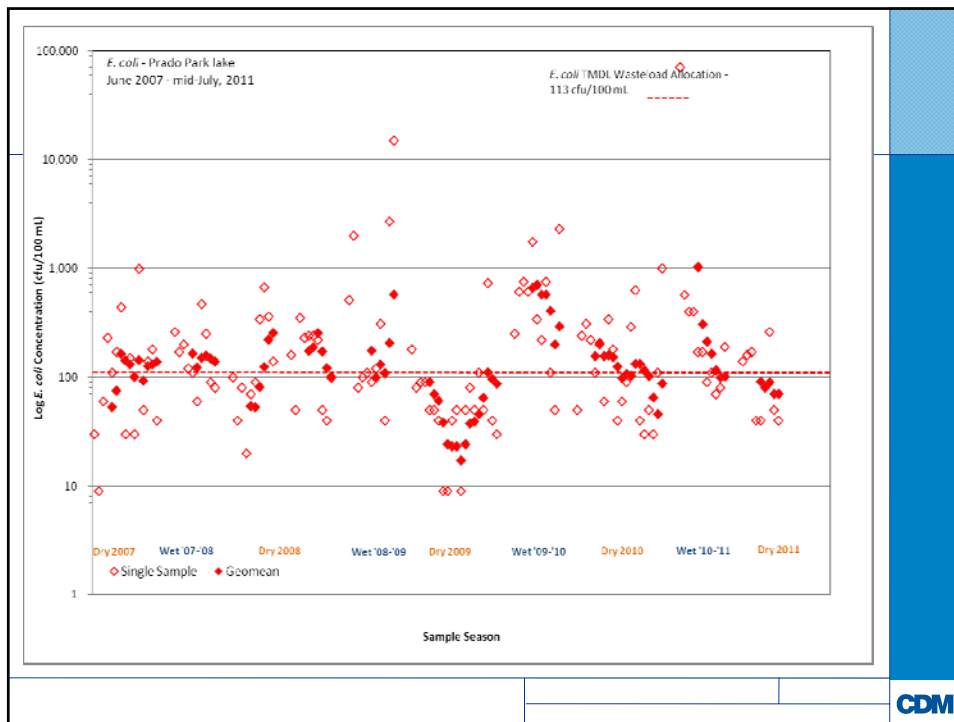
- Work with the Regional Board on Approval of CBRP
- Implementation of CBRP source evaluation activities replaces these Urban Source Evaluation Plan requirements:
 - Annual identification of source evaluation projects - replaced by implementation of CBRP Step 1
 - Semi-annual reports - replaced with annual reporting requirement in CBRP

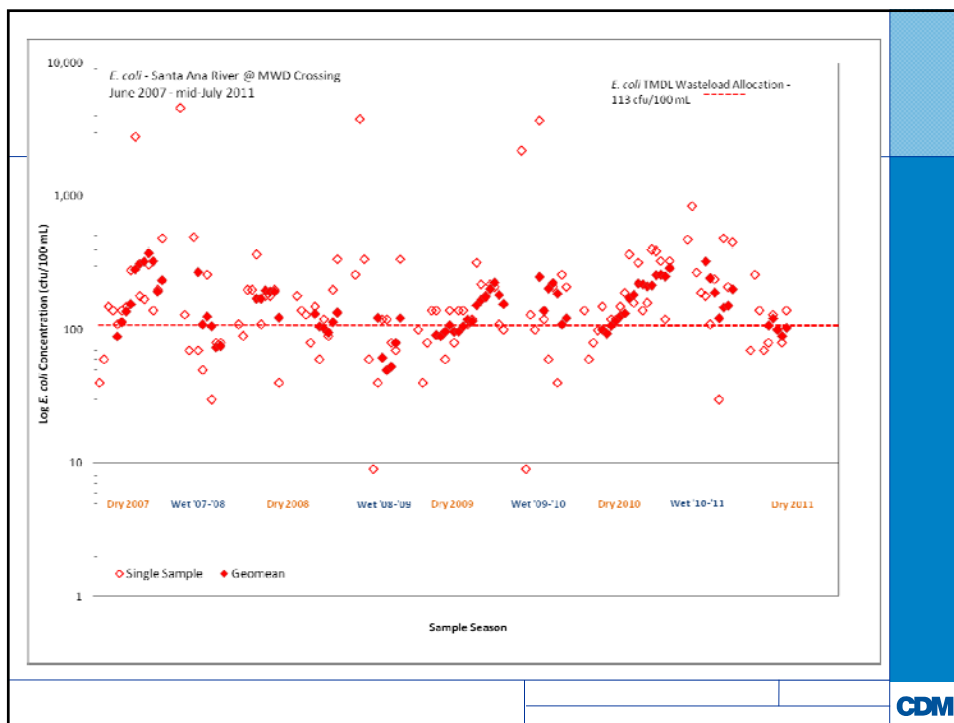
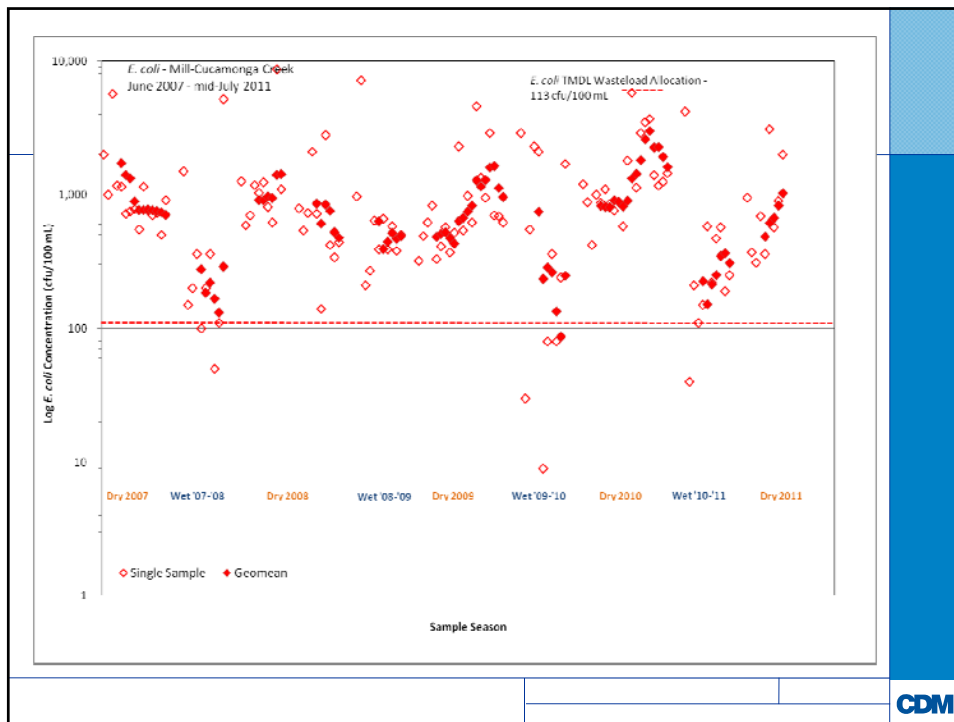
CDM

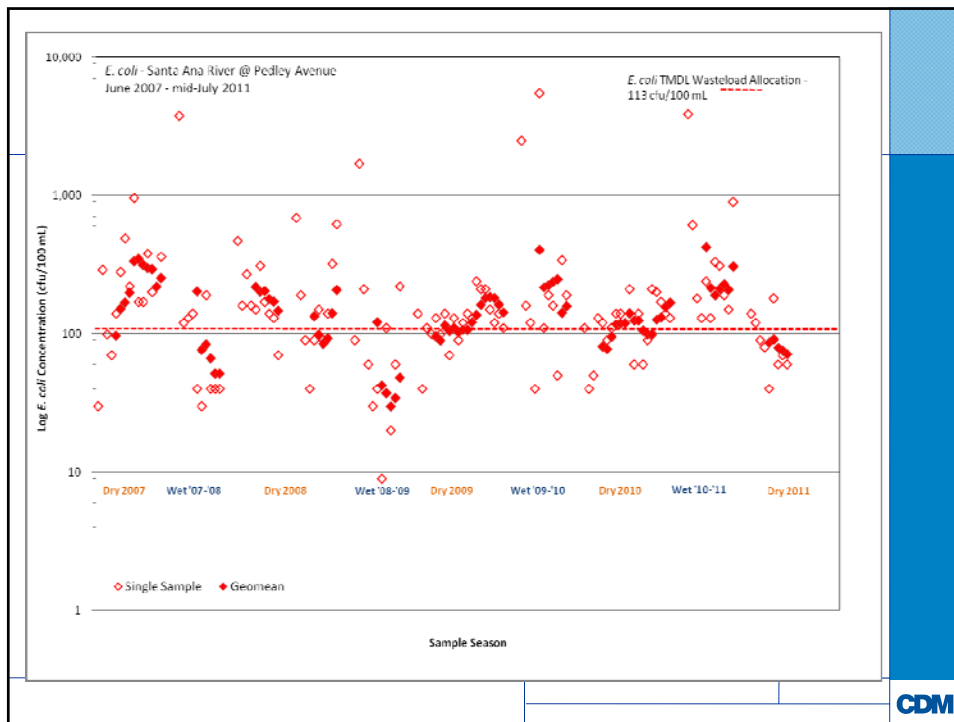
WATERSHED-WIDE COMPLIANCE MONITORING PROGRAM

Watershed-Wide Compliance Monitoring Program, 2011-2012

- Monitoring
 - Dry season monitoring began week of May 16th; will be completed week of September 26th
 - To date, no problems to report for this season
- Reporting
 - Draft 2011 dry season report due December 5th; final due December 29th







SOURCE EVALUATION PROJECTS

Source Evaluation Program, 2011-2012	
<ul style="list-style-type: none"> • Original Scope of Work – July, 2010 • Approval from Regional Board – December, 2010 • Sampling initiated in April 2011 after rainy weather ended • Final data collection/laboratory analysis – mid-July 2011 • Box Springs Channel memorandum – draft sent to SAWPA July 26, 2011 • Currently preparing draft memoranda for other tasks – delivery by COB August 12, 2011 	CDM

Source Evaluation Program Tasks	
<ul style="list-style-type: none"> • Box Springs Follow-up Study - evaluate current bacterial indicator levels and verify that human source bacteria are no longer present • Preliminary Characterization of Bacteria Loading from MS4 in Pomona and Claremont - Gather dry season/dry weather bacteria data to provide preliminary characterization of potential bacteria loading and presence/absence of human bacteria sources from LA County portion of the MSAR watershed • Dry Weather Flow Data Collection – Provide data to support ongoing efforts to characterize dry weather flows in the watershed 	CDM

Source Evaluation Program Tasks

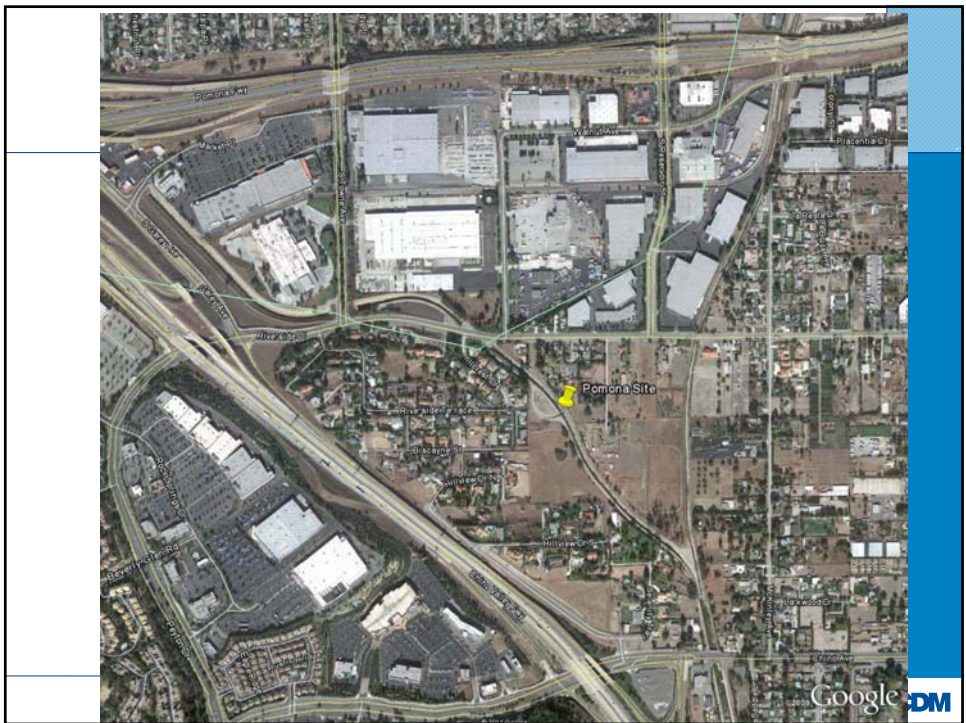
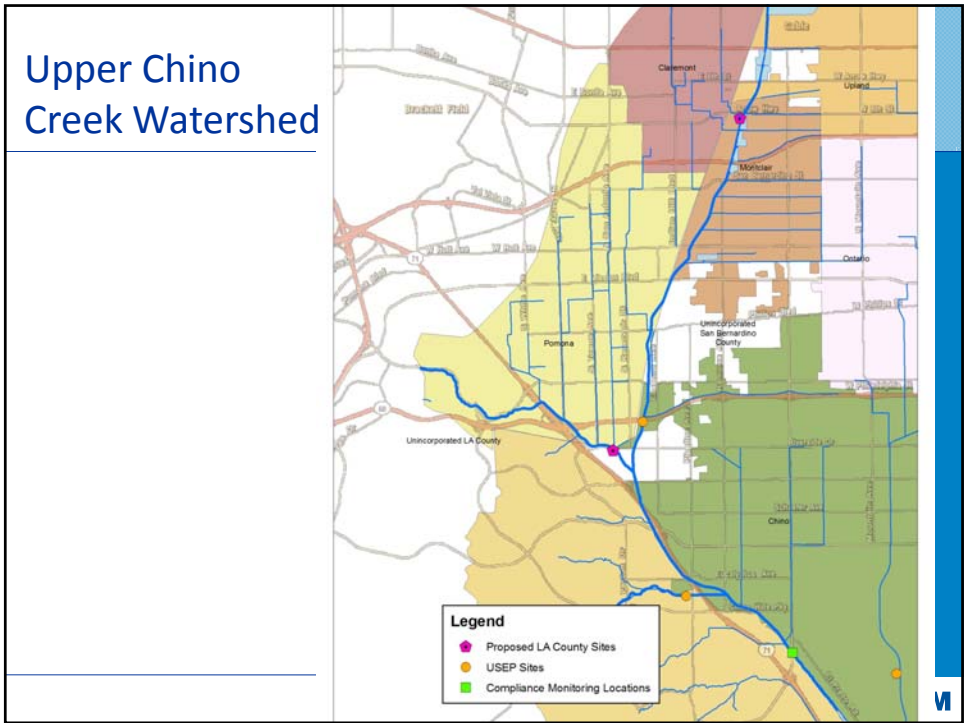
- **Calculate Mass Balance for Dry Weather Conditions** – Support ongoing effort to quantify, to the extent possible, the mass balance of bacterial indicators under dry weather conditions based on known dry weather hydrology, source of flow, and available bacteria concentration data
- **Calculate Log Standard Deviation (LSD) at Monitoring Sites** - Calculate LSD values for the USEP and Watershed-wide Compliance monitoring sites

CDM

Source Evaluation Program – Box Springs Channel

Sample Date	Fecal coliform (cfu/100 mL)	<i>E. coli</i> (cfu/100 mL)	Bacteroides
4/19/11	540	780	Absent
4/27/11	770	990	Absent
5/3/11	3,900	2,100	Absent
5/11/11	2,400	2,000	Absent
5/19/11	900	1,400	Absent

CDM





Source Evaluation Program – Data Results, Pomona MS4 Sample Location

Sample Date	Fecal coliform (cfu/100 mL)	E. coli (cfu/100 mL)	Bacteroides
4/19/11	370	160	Absent
4/28/11	60	80	Present
5/5/11	> 510	1510	Present (very low concentration)
5/12/11	1280	970	Absent
5/20/11	> 480	1290	Absent
5/24/11	440	390	Absent
6/2/11	550	410	Absent
6/9/11	800	1000	Present (very low concentration)
6/14/11	570	670	Absent
6/24/11	> 950	750	Absent

<h2>Source Evaluation Program – Next Steps</h2>	
<ul style="list-style-type: none">• Complete QA/QC of data• Prepare remaining draft memoranda – plan to receive by COB August 12	
	