

INLAND EMPIRE INFRASTRUCTURE REPORT CARD

An Overview

Mark Norton, P.E.
Chair, IE Report Card
Water Resources and Planning Mgr., SAWPA

National Infrastructure Report Card

PROGRESS REPORT	
America's Infrastructure	
DATE 2003	
Roads	D+ ↓
Bridges	C ↔
Transit	C- ↓
Aviation	D ↔
Schools	D- ↔
Drinking Water	D ↓
Wastewater	D ↓
Dams	D ↓
Solid Waste	C+ ↔
Hazardous Waste	D+ ↔
Navigable Waterways	D+ ↓
Energy	D+ ↓
America's Infrastructure GPA	D+
Total Investment Needs (estimated five-year need)	\$1.6 Trillion

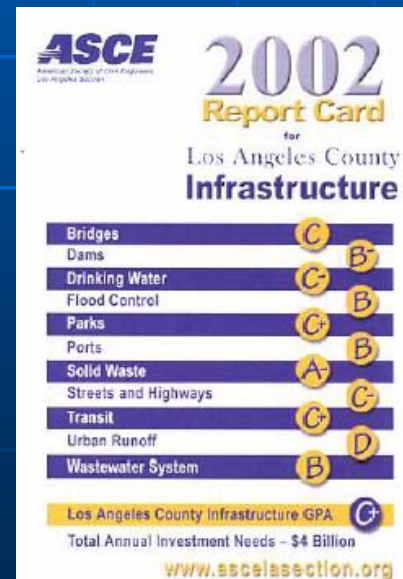
History

- In 2002, Orange County and Los Angeles County conducted an infrastructure report card patterned after the American Society of Civil Engineers (ASCE) National Report Card
- In 2003, the SAWPA and San Bernardino and Riverside Counties ASCE Branch were approached about initiating an infrastructure report card for the Inland Empire area.
- The first meeting of the Inland Empire Infrastructure Report Card coordination group was held in October 2003.

Genesis of the Report Card (Cont'd)

- The boundaries of the were decided by the stakeholders to be the full San Bernardino and Riverside Counties.
- Goals and a mission for the report card were established.

- A methodology for the report card developed largely patterned after previous report card development efforts in LA and OC.



Objectives

- Focus on Riverside and San Bernardino County
- To prepare an assessment of infrastructure in order to build support for dedicated and consistent sources of funding
- To maintain consistency with the ASCE National Report Card
- Report Card needs to be credible and defensible

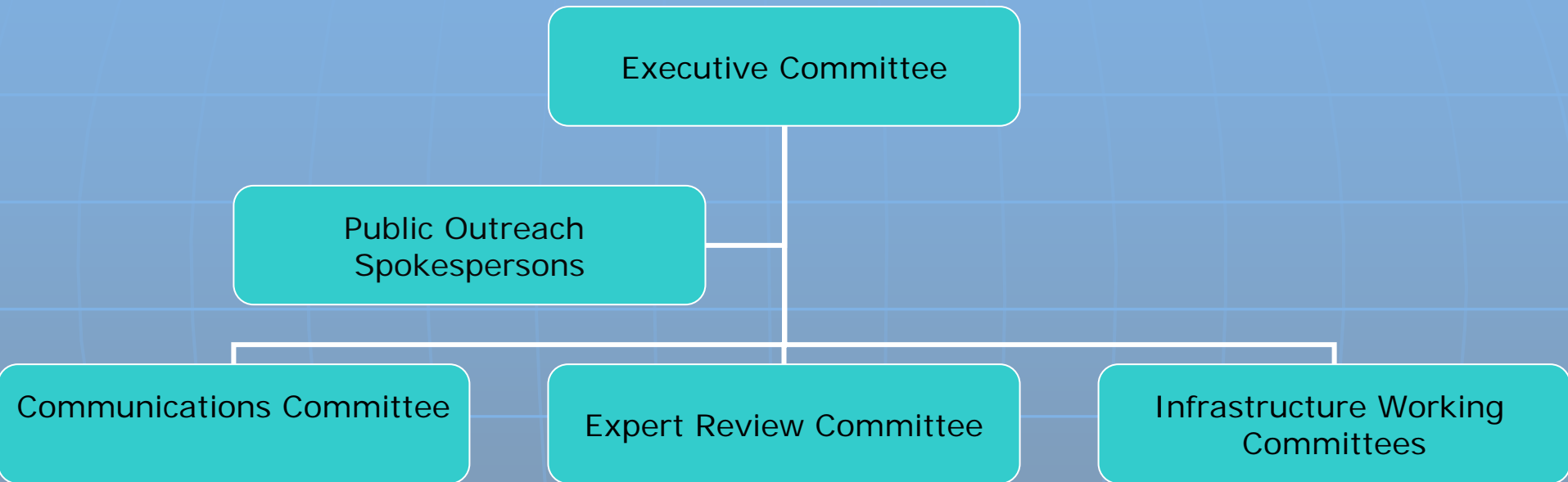


Objectives (Cont'd)

- *Do not re-invent the wheel!*
Model after ASCE National Report Card
- Use existing data as much as possible
- Develop a standard methodology & grading with flexibility for different categories
- Use locally recognized experts both in the public & private sectors for this effort
- Focus is on the County, not individual cities within the County, for this effort



Organization



Executive Committee

Mark Norton, <i>SAWPA, chair</i>	William Green, <i>RBF Consulting</i>
Jeffrey Davis, <i>Water Resources Institute, Cal State Univ SB</i>	Linda Sweaney, <i>San Bernardino Co Superintendent of Schools</i>
Peter Bucknam, <i>Bucknam & Associates</i>	Paul Ryan, <i>Inland Empire Disposal Association</i>
T. Jarb Thaipejr, <i>City of Loma Linda</i>	Mike Thornton, <i>TKE Engineering</i>

Executive Committee Mission

The Executive Committee was responsible for organizing and guiding the report card effort. They are responsible for gathering the grades from the Review Councils and printing up the report card. The Executive Committee is also responsible for planning and hosting the press and publicity, and all other PR events.

Infrastructure Working Group

Subject	Chairperson
Transportation	Peter Bucknam, <i>Bucknam & Associates</i>
Water	Jeffrey Davis, <i>Water Resources Institute, Cal State Univ SB</i>
Wastewater	
Urban Runoff/Flood Control	Mike Thornton, <i>TKE Engineering</i>
School Facilities	Linda Sweaney, <i>San Bernardino Co Superintendent of Schools</i>
Solid Waste	Paul Ryan, <i>Inland Empire Disposal Association</i>
Aviation	
Parks & Recreation Facilities	T. Jarb Thaipejr, <i>City of Loma Linda</i>

Infrastructure Working Group Objectives

- Consisted of of Technical experts from field – both public and private sector
- Gathered data – either review of existing data where available or surveys for new data. The kind of data collected would result in assessment of infrastructure condition, capacity, & operation
- Compiled and analyzed the data, resulting in the development of a summary report
- Determined an initial grade.
- Developed a short executive summary as well as a comprehensive report. The report, at a minimum, would summarize the methodology and criteria used, findings and results, and list the sources of data.

Review Committee Objectives

The Review Committee will consist of senior management experts in the specific category. The council will be comprised of leaders in the public sector, consultant /private industry, academia, and where appropriate the environmental community.

- Responsibilities of the Review Committee are to:
 - Review and evaluate methodology.
 - Review and validate Infrastructure Working Committee findings/Report
 - Develop overall assessment statement and general overview statements of what grade means.
- The Review Committee has the ability to adjust the grades ups or down, based on information not considered by the Infrastructure Working Committees.

Schedule for the Report Card

Tentative Completion Dates	Task Number	Task Description	Infrastructure Working Committee	Review Committee	Communications Committee	Executive Committee
Nov 18 January 20	1	Form Inland Empire Infrastructure Committee under leadership of ASCE IE branch. Form Working Committees	X	X	X	X
Feb 17	2	Working Committees establish report card criteria for each category and sub topics.	X			
Apr 20	3	Working Committees gather and evaluate data in response to “criteria.” Identify draft grades.	X		X	
May 18	4	Review committee critiques documentation and draft grades.		X		
Jun 15	5	Working committees present results to Executive Committee. Communications Committee begins public outreach.	X	X		
July 20	6	Communication committee creates “Executive Summary” draft.			X	
Aug 17	7	Executive Committee produces complete draft of entire infrastructure report card.	X	X	X	
Sept 21	8	Print and “distribute” the report.			X	X
	9	Communications committee implements the communication plan.			X	X

Fundamental Assessment Criteria

- Condition
- Capacity
- Operations



Condition

- Existing or Near Future Condition Assessment
- Considerations taken for projects funded or in design



Capacity

- Existing and future capacity
- Master Plans and Funding Plans available



Operations

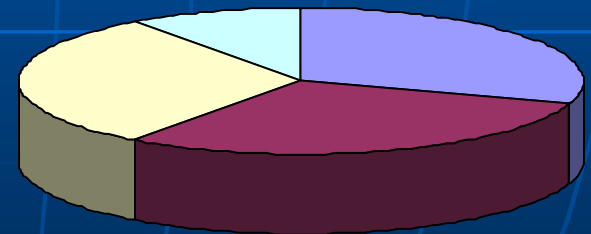
- Very Infrastructure Dependent
- Examples:
 - The number of overflows in wastewater systems
 - NPDES discharge violations for stormsewer systems
- Suggested Approach
 - Complying with regulatory requirements
 - Having sufficient funding levels for facility maintenance



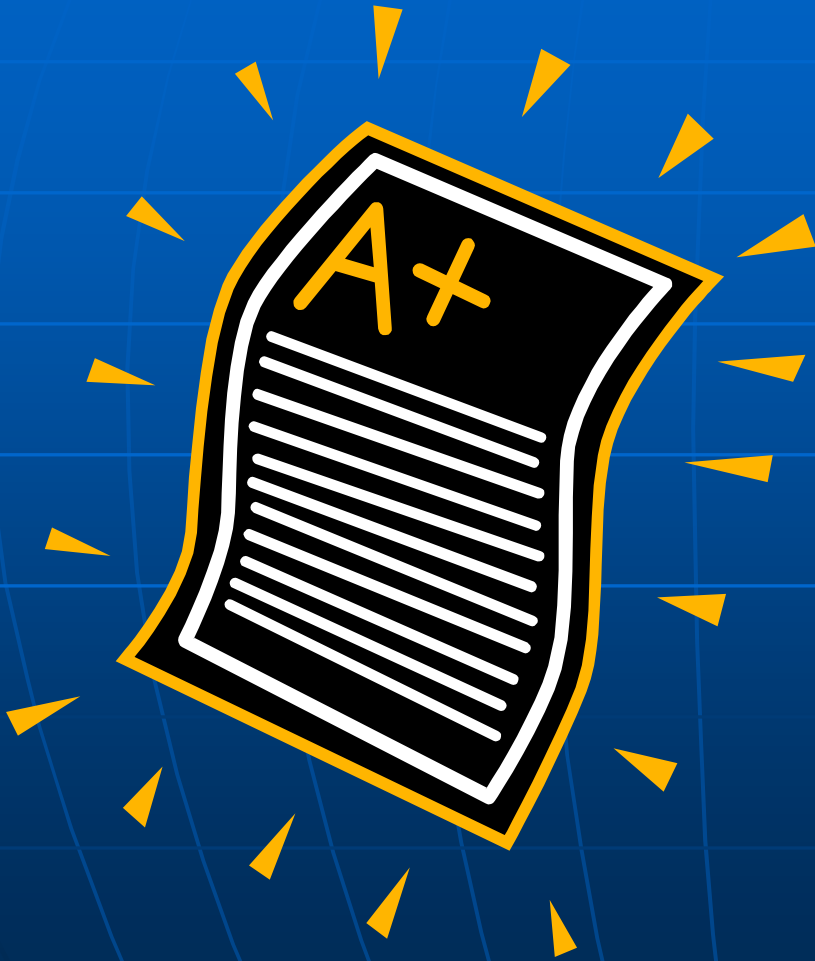
Suggested Weighting Factor

- Condition - 30%
- Capacity - 30%
- Operations - 30%

- Variable - 10%



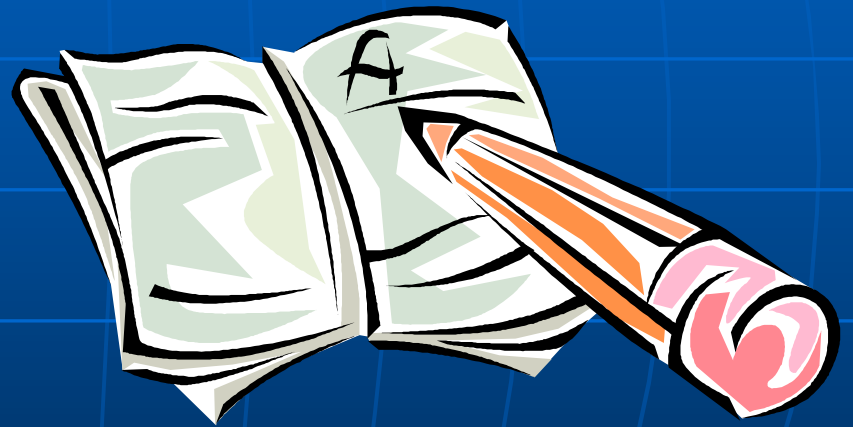
Grading Criteria



- Follow ASCE Report Card Methodology
- Utilize Grading Criteria That General Public Relates To

Grading Criteria

- A = 90-100%
- B = 80 - 89%
- C = 70 - 79%
- D = 41 - 69%
- F = 40% or lower

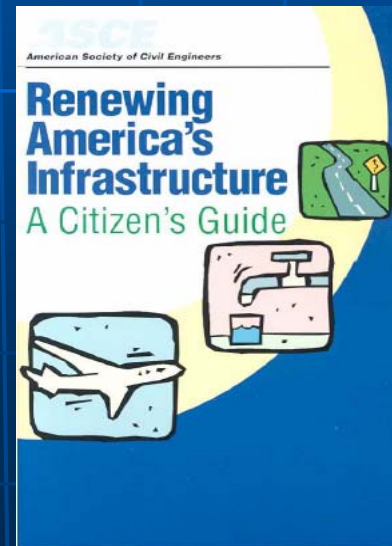


The Infrastructure “Report Card”

Consists of two parts:

- The Report Card
 - A Detailed Report

PROGRESS REPORT	
America's Infrastructure	
DATE 2003	
Roads	D+ ↓
Bridges	C ↔
Transit	C- ↓
Aviation	D ↔
Schools	D- ↔
Drinking Water	D ↓
Wastewater	D ↓
Dams	D ↓
Solid Waste	C+ ↔
Hazardous Waste	D+ ↔
Navigable Waterways	D+ ↓
Energy	D+ ↓
America's Infrastructure GPA	D+
Total Investment Needs (estimated five-year need)	\$1.6 Trillion



Aviation

- Airports (Ontario, San Bernardino International, Norton AFB airfield, George AFB airfield)
- All infrastructure in excellent condition
- Maintenance funding sufficient
- Regulatory compliance satisfactory



Parks, Rec. & Environmental

- Second most important factor in choosing home location (after schools)
- Holistic approach needed to deal with competing needs
- Problems are: Parks, Rec, & Envir has not been considered a part of our “infrastructure” Capacity not assured
- No mandated funding – “easy” to cut



School Facilities

- Problems are:
 - Enormously costly maintenance backlogs
 - Need for permanent class rooms
 - Need for retrofits to older schools



© Friedrich A. Lohmiller, 2000

Solid Waste

- Significant recycling implemented
- Permitted capacity available
- Problems are: Big difference in capacity availability between Riv. and S.B. Counties



Transportation

- Pavement maintenance program in place
- Bridges overall very good
- Problems are: Funding
- Bus service (frequency) below comparable cities (San Diego, San Jose,..)



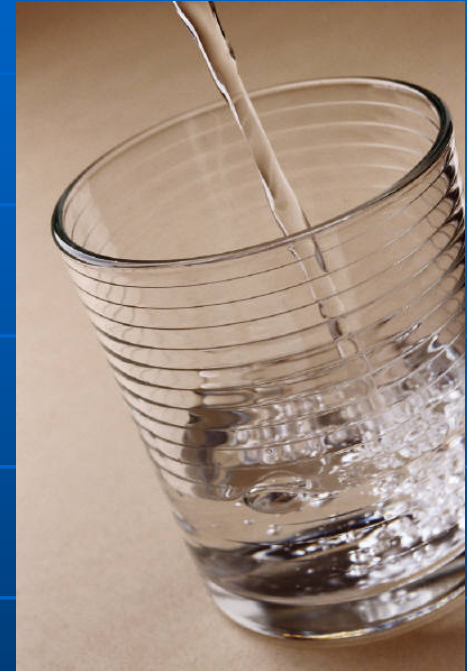
Urban Runoff/ Flood Control

- Flood control system works well preventing flooding.
- Problems are: Existing flood control system conveys dry weather urban runoff to beaches
- A regional watershed planning effort required to integrate flood control and urban runoff control
- Local funding needed



Water

- Volume and quality OK for 5-10yrs
- Problems are: Gradual importation cut backs over next 15 years
- Cost will increase as new pollutants are found



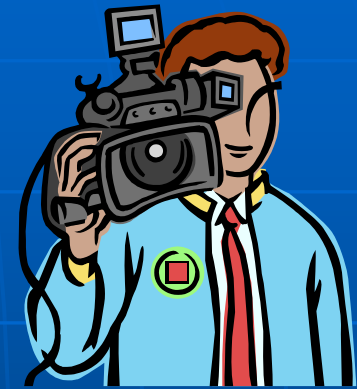
Wastewater

- Special districts/
municipalities with dedicated
fees perform best
- Treatment better than
collection systems because of
national requirements
- Problems are: Lack of
dedicated funding
- A regulatory framework for
collection systems needed



Public Relations Committee

- A PR campaign will be developed for publicizing the Report Card
 - Contact all Radio, TV Stations, and Print Media in your market
 - Identify the "Go To" journalist and give him updates
 - Exclusives are OK, but journalists' deadlines/priorities change
 - Keep the grades under wrap until unveiling



Future Milestones

- PR Committee will be meeting with press and policy makers to inform them of process in mid-June 2004
- Infrastructure grade report for Inland Empire is scheduled for Sept. 2004.

Questions

and

Answers



