



...A United Voice for the Santa Ana Watershed

NOTICE AND AGENDA
STEERING COMMITTEE MEETING

Thursday, August 26, 2010 - 3:00 p.m.

SAWPA, 11615 Sterling Avenue, Riverside, CA, 92503

Steering Committee Members

Ron Sullivan EMWD

Wyatt Troxel IEUA

Bill Campbell Orange County

Marion Ashley Riverside County

Josie Gonzales San Bernardino County

Beth Krom City of Irvine

Ron Loveridge City of Riverside

Pat Morris City of San Bernardino

Ali Sahabi SE Corporation

Garry Brown Orange County CoastKeepers

Steve PonTell Regional Water Quality Control Board

- 1. Welcome and Introductions Wyatt Troxel
2. Public Comments

Members of the public may address the Commission on any item that is within the jurisdiction of the Commission; however, no action may be taken on any item not appearing on the agenda unless the action is otherwise authorized by Subdivision (b) Section 54954.2 of the Government Code.

- 3. Public Hearing regarding the ranking for all submitted OWOW Projects (SC#0003) Staff Report
- Review of evaluation and ranking process Dan Rodrigo, CDM
- Results of the Ranking Process Salvador Lopez

NOTE: Public comment is limited to three (3) minutes per participant.

- Public Hearing Wyatt Troxel
- Open Public Hearing
- Close Public Hearing
Recommendation: Receive public comment and adopt the ranked projects list.

- 4. Presentation of Project Portfolios for IRWM Round 1 Funding (SC#0004) Recommendation: Direct staff to develop a project list for Round 1 Funding based on portfolio preference. Salvador Lopez

- 5. Next Steps Celeste Cantu

- 6. Approval of Minutes from the Meeting of 7-22-10 Recommendation: Approve as submitted Wyatt Troxel



7. OWOW Schedule
Recommendation: Receive and file. Salvador Lopez

8. OWOW Planning Update - U.S. Bureau of Reclamation Grant
Recommendation: Receive and file. Mark Norton

9. Announcements
NEXT MEETING: **September 23, and/or September 30 - 3 p.m.
at SAWPA** Celeste Cantú

10. Adjournment

OWOW STEERING COMMITTEE MEMORANDUM NO. 0003

DATE: August 26, 2010
TO: Steering Committee
SUBJECT: **Proposed OWOW Prioritized Master Project List**
PREPARED BY: Jeffrey Beehler, Program Manager

RECOMMENDATION

It is recommended that the OWOW Steering Committee:

1. Conduct a public hearing to receive public comment regarding the Proposed Prioritized Master Project List; and
2. Adopt the Proposed Prioritized Master Project List for inclusion in the OWOW Integrated Regional Water Management Plan.

DISCUSSION

The vision of the One Water One Watershed (OWOW) planning process is a sustainable Santa Ana River Watershed that is drought-proofed, salt balanced, and supports economic and environmental vitality in the year 2030. Through the OWOW process, stakeholders from around the Watershed developed a plan to implement that vision and submitted projects that move the watershed toward its realization. The OWOW process focused on a watershed approach that encouraged investment in multi-jurisdictional and multi-benefit projects. In addition, stakeholders in their planning considered the needs of disadvantaged communities, a need for sustainability and an emphasis on adapting to a changing climate.

The “Call for Projects” was completed on June 30, 2010. Two hundred and ninety seven (297) project proposals from 64 sponsors were submitted to SAWPA in the first call for OWOW projects. Total project cost was approximately \$3.6 Billion with a funding request from OWOW of \$1.7 Billion. Nearly 70% of the projects claim to benefit more than one municipality or sub-watershed. 40% of the projects claim benefits to the region in addition to water supply.

CDM, assisted by SAWPA staff, assessed the data sets for completeness and confirmed correctness of data entry with project proponents in cases where statistical outliers were identified. Other than data entry errors, the data was taken at face value as the project proponent had entered it for the purposes of ranking this master list. Projects considered for OWOW funding under Prop 84, IRWMP Round 1 will be vetted and validity of data entered will be confirmed. Projects funded under this funding program, must be consistent with the goal of an integrated watershed approach and will be based on benefits provided. CDM ranked the projects using the ranking criteria through a decision modeling tool called, *Decision Plus*. This decision support tool is commonly used to examine multi-benefit projects.

The Steering Committee developed project ranking criteria to assess: 1) the benefits provided; 2) an element of environmental/ social stewardship; 3) the return on investment; 4) the production of timely results, and; 5) the degree of collaboration. Eleven criteria were established for assessment and the relative importance of the criteria compared to each other was determined by the Steering Committee.

JB:pb

Attachment: Project List
CM 0003 OWOW Project List 8-26-10

Proposed OWOW Prioritized Master Project List

Rank	Project ID	Total Score	Project Name	Agency
1	1167	0.597	City of Fontana Flood Control and Aquifer Recharge Program	City of Fontana
2	1015	0.548	The Project consists of two detention basins and approximately 11,800 lineal feet of open channel and storm drains from Juniper Flats westerly. It represents Phase 1 of the four phase MDP.	City of Menifee
3	1236	0.544	San Jacinto Wildlife Area Habitat Sustainability and Enhancement Utilizing Recycled Water	Eastern Municipal Water District
4	1272	0.541	Repairs to the Unlined RCP Reach IVA and Reach IVB Santa Ana Regional Interceptor (SARI)	Santa Ana Watershed Project Authority
5	1096	0.514	San Jacinto Indirect Potable Reuse	Eastern Municipal Water District
6	1171	0.508	Perris II Desalination Facility	Eastern Municipal Water District
7	1211	0.493	Sludge Dewatering, Odor Control, and Primary Sludge Thickening at Plant No. 1, Project No. P1-101	Orange County Sanitation District (OCSD)
8	1205	0.483	Storm Water Capture and Groundwater Recharge in the Perris North Groundwater Management Zone	Eastern Municipal Water District
9	1190	0.472	Cactus Basins No. 3 and No. 3A	San Bernardino County Flood Control District
10	1104	0.465	Temescal Gardens Online	Elsinore Valley Municipal Water District
11	1173	0.465	Hemet/San Jacinto Integrated Recharge and Recovery Program Phase II	Eastern Municipal Water District
12	1136	0.449	Groundwater Replenishment System - Flow Equalization	Orange County Water District
13	1113	0.446	Regional Recycling Plant No.5 Expansion	Inland Empire Utilities Agency
14	1117	0.446	RP-5 De-bottlenecking and RP-2 Capacity Improvement	Inland Empire Utilities Agency
15	1047	0.443	Industrial Way Water Quality and Storm Drain Improvement Project	city of costa mesa
16	1082	0.44	Arlington Desalter Connection Project No. 27-1208 & Western Municipal Water District Promenade Connection	City of Corona

17	1188	0.438	West Fontana Basin	San Bernardino County Flood Control District
18	1181	0.434	Perris II Desalter Ancillary Facilities	Eastern Municipal Water District
19	1135	0.429	Groundwater Replenishment System Expansion	Orange County Water District
20	1103	0.426	San Jacinto River Gap Project	Riverside County Flood Control & Water Conservation District
21	1250	0.426	Cucamonga Creek Watershed Regional Water Quality Project (Mill Creek Wetlands)	City of Ontario
22	1166	0.423	Infiltration and Inflow Reduction Program	Costa Mesa Sanitary District
23	1226	0.422	Brine Line (SARI) SCADA System	Santa Ana Watershed Project Authority
24	1291	0.422	Place-Based GIS Land Use Design Tool to Protect Watershed Function in the Upper Santa Ana River Watershed	California Resource Connections, Inc.
25	1168	0.421	Modjeska Park Parking Detention/Infiltration Facility (Design Only)	City of Anaheim
26	1160	0.42	Constructed Wetland Habitat Restoration and Water Reclamation project for the Santa Ana River Borrow Pit.	San Bernardino Valley Water Conservation District
27	1180	0.419	Cactus Basins No. 4 and No. 5	San Bernardino County Flood Control District
28	1090	0.411	San Bernardino National Forest Ecological Restoration and Watershed Improvement	USDA Forest Service - San Bernardino National Forest
29	983	0.409	East Garden Grove Wintersburg Channel Urban Runoff Diversion Project, Phase I	City of Huntington Beach
30	1163	0.405	Cable Creek Basin and Spreading Grounds	San Bernardino County Flood Control District

31	1000	0.399	Characterization and optimization of cost-effective treatment wetlands for surface water quality improvement	Santa Ana Watershed Project Authority
32	1162	0.397	Sun City Force Main and Recycled Water Pipeline Replacement	Eastern Municipal Water District
33	1247	0.395	Arlington Basin Water Quality Improvement Project	Western Municipal Water District
34	987	0.392	San Jacinto Urban Runoff Treatment & Control	Lake Elsinore and San Jacinto Watersheds Authority
35	1214	0.39	Pharmaceutical Collection Program	Orange County Sanitation District (OCSD)
36	986	0.387	San Jacinto Watershed Nutrient TMDL Pollutant Trading Study	Lake Elsinore and San Jacinto Watersheds Authority
37	948	0.383	The Quail Valley Groundwater Infiltration Improvements Project	City of Menifee
38	1133	0.383	Sunset Gap Seawater Intrusion	Orange County Water District
39	1094	0.377	Chino Creek Multipurpose Corridor	Inland Empire Utilities Agency
40	988	0.376	San Jacinto River Riparian Habitat Restoration	Lake Elsinore and San Jacinto Watersheds Authority
41	1176	0.374	Mission Zanja Creek Feasibility Study	San Bernardino County Flood Control District
42	989	0.373	Lake Elsinore Water Quality Modeling	Lake Elsinore and San Jacinto Watersheds Authority
43	1216	0.371	IEUA Regional Water Budget Program	Inland Empire Utilities Agency

44	1075	0.368	Enhanced Stormwater Capture and Recharge along the Santa Ana River	San Bernardino Valley Municipal Water District
45	1186	0.368	Etiwanda/San Sevaine Basins 1 through 4	San Bernardino County Flood Control District
46	1213	0.368	Regional Residential Landscape Retrofit Program	Inland Empire Utilities Agency
47	975	0.367	Lake Elsinore Alum/Phoslock Treatment	Lake Elsinore and San Jacinto Watersheds Authority
48	1206	0.367	Watershed Action Plan	Inland Empire Utilities Agency
49	1129	0.366	Drainage A Detention Basin	City of Chino
50	1201	0.366	IEUA Regional Landscape Evaluation Program	Inland Empire Utilities Agency
51	1208	0.366	Regional Residential Landscape Financing Program	Inland Empire Utilities Agency
52	1219	0.363	Regional Commercial Incentive Program	Inland Empire Utilities Agency
53	985	0.362	Lake Elsinore & Canyon Lake Nutrient TMDL Monitoring	Lake Elsinore and San Jacinto Watersheds Authority
54	1240	0.362	Chino Creek Wellfield, Wells 1, 2, and 3	Western Municipal Water District
55	1143	0.361	Central Orange County Trash Reduction Project	Orange County Coastkeeper
56	1215	0.358	La Sierra Pipeline Project	Western Municipal Water District
57	1174	0.354	Quail Valley Sewer Improvements (Subarea 9)	Eastern Municipal Water District
58	1164	0.35	Orange County LID Implementation Project	Orange County Coastkeeper
59	1217	0.35	Regional Public Sector Program	Inland Empire Utilities Agency

60	974	0.349	Lake Elsinore Fishery Enhancement	Lake Elsinore and San Jacinto Watersheds Authority
61	1003	0.349	Mill Creek Diversion Project	Orange County Water District
62	1158	0.346	Brine Line (SARI) Flow Equalization Structure	Santa Ana Watershed Project Authority
63	951	0.345	River Road Treatment Wetlands	Orange County Water District
64	1270	0.345	San Bernardino Clean Water Factory – Phase I	City of San Bernardino Municipal Water Department
65	1243	0.341	Borrego Canyon Wash Stabilization and Restoration Project	County of Orange/OC Watersheds
66	1278	0.34	Wells 21 and 22 Project	Irvine Ranch Water District
67	1049	0.339	Upper Santa Ana Watershed Alluvial Scrub Habitat Restoration Project and Mitigation Banking Assessment	San Bernardino Valley Water Conservation District
68	955	0.338	Cypress Channel Multipurpose Corridor	Inland Empire Utilities Agency
69	1279	0.338	Wineville Extension Pipeline	Inland Empire Utilities Agency
70	1281	0.338	Baker Water Treatment Plant Project	IRVINE RANCH WATER DISTRICT
71	1089	0.337	Temescal Gardens	Elsinore Valley Municipal Water District
72	1169	0.337	Strand Ranch Water Banking Project Recovery Wells and Conveyance Facilities	Irvine Ranch Water District
73	1260	0.337	Mid-Basin Injection Project	Orange County Water District

74	1016	0.335	Santa Ana Watershed Vireo Monitoring and Breeding Bird Surveys	Santa Ana Watershed Association
75	1128	0.335	Big Bear Lake Hypolimnetic Oxygenation System	Santa Ana Watershed Project Authority
76	1280	0.333	Renewable Energy Expansion Program	Inland Empire Utilities Agency
77	1283	0.333	Brine Line Maintenance Access Structures, Reach V and Reach IVB	Santa Ana Watershed Project Authority
78	1111	0.332	930-Zone Pipeline and Reservoir, Expansion of the CCWRF-RP-1 S.Zone Pump Station and Installation of a Parallel Line to RP-1 Outfall	Inland Empire Utilities Agency
79	990	0.331	Stormwater Treatment Wetlands for Canyon Lake	Lake Elsinore and San Jacinto Watersheds Authority
80	1116	0.331	Lake Mathews Watershed Master Water Quality Improvement Project Phase II	Riverside County Flood Control & Water Conservation District
81	943	0.329	In-Conduit Hydroelectric Project	NLine Energy, Inc.
82	1185	0.329	Lytle Cajon Basin	San Bernardino County Flood Control District
83	1002	0.326	Fletcher Basin Rehabilitation	Orange County Water District
84	976	0.324	Canyon Lake Dredging Enhancements	Lake Elsinore and San Jacinto Watersheds Authority
85	999	0.324	Orange County Regional Stormwater Infiltration Program	Orange County Water District
86	1269	0.324	Brine Line (SARI) Solids Control Structures	Santa Ana Watershed Project Authority
87	1229	0.323	East Diamond Valley Recycled Water Storage Pond and Distribution Pipeline Project	Eastern Municipal Water District

88	1200	0.319	ARTIC Use of GWRS Water for Irrigation and Groudwater Recharge	City of Anaheim
89	1288	0.317	Borrego Canyon Wash Bypass Channel Improvements within the portion of Shea/Baker Ranch Property (Bypass Channel)	Shea/Baker Ranch, LLC
90	1212	0.315	Chino II Desalter Brine Minimization	Western Municipal Water District
91	977	0.313	Canyon Lake Alum/Phoslock Treatment	Lake Elsinore and San Jacinto Watersheds Authority
92	1227	0.311	Perchlorate Wellhead Treatment System Pipelines	West Valley Water District
93	1020	0.31	Water Conservation Demonstration Garden	San Bernardino Valley Municipal Water District
94	1130	0.31	Santiago Enhanced Recharge	Orange County Water District
95	945	0.309	Hypolimnetic Oxygenation System for Canyon Lake	Lake Elsinore and San Jacinto Watersheds Authority
96	1137	0.308	Enhanced Water Conservation at Prado	Orange County Water District
97	1088	0.307	Magnolia Channel Detention Basin	City of Chino
98	981	0.305	Santiago Basins Pump Station	Orange County Water District
99	1265	0.304	Riverside North Aquifer Storage and Recovery Project	City of Riverside
100	1275	0.304	A Shared Workspace is the Foundation for Collaborative Watershed Management.	S4S Solutions Inc.
101	984	0.303	Water Use Efficiency Program	City of Ontario Municipal Utilities Company
102	1095	0.302	Perchlorate Wellhead Treatment System Wells and SCADA	West Valley Water District
103	1234	0.3	The San Jacinto Citrus In-Lieu Recycled Water Pond Pump Station and Distribution Pipeline Project	Eastern Municipal Water District
104	1149	0.297	Santa Ana River Interceptor (SARI) Line Relocation Project	Orange County Flood Control District

105	1172	0.297	Quail Valley Sewer Improvements (Subareas 1-8)	Eastern Municipal Water District
106	1300	0.297	Inland Empire Brine Line Capacity Pool Program	Santa Ana Watershed Project Authority
107	1018	0.294	Perris Water Filtration Plant Reject Recovery Facility	Eastern Municipal Water District
108	1284	0.291	Natural Treatment System Facility No. 62 (NTS-62)	IRVINE RANCH WATER DISTRICT
109	1287	0.29	Enhanced Stormwater Capture and Recharge along the Santa Ana River Phase II	San Bernardino Valley Municipal Water District
110	1050	0.287	14th Street Groundwater Recharge and Storm Water Quality Treatment Integration Facility	City of Upland
111	1091	0.287	Recycled Water Transmission Main (Santa Ana River Segment)	City of Riverside
112	965	0.286	Fairview Park Wetlands and Riparian Habitat Project	City of Costa Mesa
113	1132	0.286	Miraloma Recharge Basin	Orange County Water District
114	1170	0.281	EMWD Desalination Recovery Enhancement and Brine Concentrate Management Demonstration Facility	Eastern Municipal Water District
115	1092	0.28	Groundwater Interception and Conveyance System for Selenium Load Reduction at the Lower Peters Canyon Wash, Orange County, California	Orange County Watersheds Program
116	1147	0.279	East Garden Grove-Wintersburg Channel (OCFCD Facility No. C05) from Tidegates to upstream Warner Avenue.	Orange County, Public Works, Flood Control Section, Flood Programs
117	1152	0.279	East Garden Grove-Wintersburg Channel (OCFCD Facility No. C05) from upstream Warner Avenue to downstream Goldenwest Street.	Orange County, Public Works, Flood Control Section, Flood Program
118	1007	0.278	Randolph Creek Water Quality and Habitat Enhancement Project	City of Brea
119	998	0.277	Chino Creek Wetlands	Orange County Water District

120	958	0.276	Colored Water Treatment Facility Technology Replacement and Expansion	Mesa Consolidated Water District
121	1134	0.276	Mid-Basin Injection Demonstration	Orange County Water District
122	1277	0.276	Brookhurst Widening Bio-Swale and Synthetic Turf Installation	City of Anaheim
123	962	0.275	North Basin Groundwater Protection Project	Orange County Water District
124	1151	0.275	Irvine Ranch Water District Advanced Metering Infrastructure (AMI) Project	Irvine Ranch Water District
125	1220	0.274	French Valley Recycled Water Distribution Pipeline Project	Eastern Municipal Water District
126	1237	0.271	The Menifee Recycled Water Pond Pump Station and Distribution Pipeline Project	Eastern Municipal Water District
127	1165	0.27	San Bernardino River Corridor Revitalization	California Resource Connections
128	1115	0.269	Hickory / Banana Basin Turout Flow Meter	Inland Empire Utilities Agency
129	1296	0.269	Orange Park Acres Groundwater Supplies and Conveyance Facilities	Irvine Ranch Water District (IRWD)
130	1178	0.266	Well 17 & 18 Water Treatment Facility	Rubidoux Community Services District
131	1264	0.266	Second Lower Cross Feeder Project	Municipal Water District of Orange County
132	994	0.265	City of Tustin Main Street Facility Improvements	City of Tustin
133	1244	0.265	Riverside-Corona Feeder Wells	Western Municipal Water District
134	970	0.263	Serrano Creek Restoration Plan	County of Orange
135	1184	0.263	SMART Landscapes	Irvine Ranch Water District
136	1245	0.259	Chino II Desalter Treated Water Pump Station	Western Municipal Water District

137	1106	0.256	Agency Wide Aeration System Modifications	Inland Empire Utilities Agency
138	1032	0.255	Construction and Quantitative Evaluation of the Low Impact Development Retrofit Project for Orange County Public Works Glassell Yard, Orange, California	County of Orange/OC Watersheds Program
139	1025	0.253	Model Institutional Water Conservation Makeover	San Bernardino Valley Municipal Water District
140	1045	0.253	Water Use Efficiency Improvements/Brackish Groundwater Treatment and Constructed Wetland Installation at Yorba Regional Park	City of Anaheim
141	1230	0.253	Haster Retarding Basin and Pump Station (OCFCD Facility No. C05B02/C05PS1)	Orange County, Public Works, Flood Control Section, Flood Programs
142	1242	0.253	Huntington Harbour Copper Reduction Project	Orange County Coastkeeper
143	954	0.249	Local Recycled Water Laterals Construction	Inland Empire Utilities Agency
144	1024	0.248	Restoration of the Lower Santa Ana River Marsh	Orange Coast River Park
145	1105	0.248	City of Fontana Local Recycled Water Distribution Facilities	Inland Empire Utilities Agency
146	1138	0.248	Montclair Basin SCADA improvements	Inland Empire Utilities Agency
147	1040	0.246	Eastvale Water Recycling Project	Jurupa Community Services District
148	1202	0.246	San Jacinto Recycled Water Distribution Pipeline Project	Eastern Municipal Water District
149	1248	0.246	Huntington Harbour Water Quality Improvement Program	Orange County Coastkeeper
150	1126	0.245	RP-5 Wind Turbine	Inland Empire Utilities Agency
151	1125	0.239	Turner Basin Improvements	Inland Empire Utilities Agency
152	1057	0.237	DWR Pump Station Alternative 1	San Bernardino Valley Municipal Water District

153	1038	0.235	Non-Potable Water Distribution System and Van Buren Bridge Recycled Water Pipeline	Jurupa Community Services District
154	968	0.234	Five Coves and Lincoln Basins Bypass Pipeline	Orange County Water District
155	1005	0.233	Prado Basin Sediment Management Project	Orange County Water District
156	1157	0.233	Cypress Nature Park Restoration Project	City of Cypress
157	1107	0.232	Local Recycled Water Laterals Construction	Inland Empire Utilities Agency
158	1109	0.232	Central Area Recycled Water Project	Inland Empire Utilities Agency
159	1305	0.232	San Bernardino Clean Water Factory – Phase IV	City of San Bernardino Municipal Water Department
160	991	0.227	Temescal Creek Master Trail and Park Project	Inland Empire Waterkeeper
161	1123	0.227	Ely Basin Cla Valve Replacement and Electrical Service	Inland Empire Utilities Agency
162	1118	0.225	Jurupa Pumpstation	Inland Empire Utilities Agency
163	1120	0.225	Motorized Gate Actuator Installation at RP-3	Inland Empire Utilities Agency
164	1241	0.223	Co-generation Facilities Cooling Water System Modifications and Upgrades Project J-109.	Orange County Sanitation District (OCSD)
165	1293	0.222	Syphon Reservoir Expansion	Irvine Ranch Water District
166	1026	0.221	Water Recycling Demonstration Project	City of Anaheim
167	1154	0.22	East Garden Grove-Wintersburg Channel (OCFCD Facility No. C05) from upstream Oceanview Channel (C06) Confluence to downstream Beach Boulevard.	Orange County, Public Works, Flood Control Section, Flood Programs
168	1156	0.22	East Garden Grove-Wintersburg Channel (OCFCD Facility No. C05) from upstream Quartz Street to upstream Bushard Street.	Orange County, Public Works, Flood Control Section, Flood Programs

169	1041	0.219	Roger B. Teagarden Ion Exchange Treatment Plant (IXP) Expansion	Jurupa Community Services District
170	1155	0.219	East Garden Grove-Wintersburg Channel (OCFCD Facility No. C05) from upstream Beach Boulevard to downstream Woodruff Street.	Orange County, Public Works, Flood Control Section, Flood Programs
171	1199	0.219	Baseline Feeder Well Replacement Project	San Bernardino Valley Municipal Water District
172	966	0.218	South Basin Groundwater Protection Project Interim Remediation	Orange County Water District
173	1037	0.218	West End Pump Station	San Bernardino Valley Municipal Water District
174	1301	0.217	Well 53	Irvine Ranch Water District
175	1302	0.216	Norco/Stagecoach Park Recycled Waterline	City of Corona Department of Water and Power
176	1179	0.215	East Garden Grove-Wintersburg Channel (OCFCD Facility No. C05) from 300-foot downstream the intersection of Haster Street/Lampson Avenue to 800-foot upstream.	Orange County, Public Works, Flood Control Section, Flood Programs
177	1266	0.215	Joint Anaheim/IRWD Well Field	Irvine Ranch Water District
178	1004	0.214	Recycled Water Reservoir	Orange County Great Park Corporation
179	1298	0.213	Goldenwest 6 MG Tank	Rubidoux Community Services District
180	1177	0.212	East Garden Grove-Wintersburg Channel (OCFCD Facility No. C05) from upstream Bushard Street to upstream the intersection of McFadden Street/Brookhurst Street.	Orange County, Public Works, Flood Control Section, Flood Programs

181	1246	0.212	Arlington Desalter Bionitrification Construction	Western Municipal Water District
182	1119	0.211	CMUSD #101 West Side Pumping Station Abandonment	Costa Mesa Sanitary District
183	1124	0.211	City of Chino Hills Local Recycled Water Distribution Facilities	Inland Empire Utilities Agency
184	1187	0.211	Ocean View Channel (OCFCD Facility No. C06) from upstream of the Confluence with East Garden Grove-Wintersburg Channel (C05) to downstream Beach Boulevard.	Orange County, Public Works, Flood Control Section, Flood Programs
185	1306	0.209	San Bernardino Clean Water Factory – Phase V	City of San Bernardino Municipal Water Department
186	1011	0.208	San Jacinto Watershed Urban and Agricultural Land Use Survey and Impervious Surface Mapping	Western Riverside County Agriculture Coalition
187	1290	0.205	24" Mission Blvd Pipeline (Carrera to Goldenwest tank)	Rubidoux Community Services District
188	1039	0.203	Non-Potable Water Distribution System and Indian Hills Wastewater Treatment Plant Rehabilitation	Jurupa Community Services District
189	1303	0.203	San Bernardino Clean Water Factory – Phase II	City of San Bernardino Municipal Water Department
190	993	0.201	Tustin Avenue Well	City of Tustin
191	1122	0.199	City of Chino Local Recycled Water Distribution Facilities	Inland Empire Utilities Agency
192	1144	0.198	Rhine Channel Remediation Project	Orange County Coastkeeper
193	1097	0.197	North Trumble Recycled Water Storage Ponds	Eastern Municipal Water District
194	1231	0.197	Syphon Reservoir Integration Project	Irvine Ranch Water District

195	1307	0.196	San Bernardino Clean Water Factory – Phase VI	City of San Bernardino Municipal Water Department
196	1087	0.194	Crescent Avenue Sewer Replacement	City of Buena Park
197	1112	0.193	San Sevaine Lateral and Turnouts	Inland Empire Utilities Agency
198	1203	0.193	Wintersberg Chanel Source Identification Study	Orange County Coastkeeper
199	1108	0.192	Hickory Basin Conservation Berm Outlet Modification	Inland Empire Utilities Agency
200	1189	0.191	Ocean View Channel (OCFCD Facility No. C06) from upstream of Beach Boulevard to downstream of Newland Street.	Orange County, Public Works, Flood Control Section, Flood Programs
201	1140	0.19	Jurupa Force Main Outlet Modifications	Inland Empire Utilities Agency
202	1204	0.19	Santa Ana-Delhi Channel (OCFCD Facility No. F01) from Upper Newport Back Bay to downstream of Mesa Drive.	Orange County, Public Works, Flood Control Section, Flood Programs
203	1238	0.19	Brea Creek Channel (OCFCD Facility No. A02) at Beach Boulevard.	Orange County, Public Works, Flood Control Section, Flood Programs
204	1295	0.188	Pacific Avenue 16" and 12" Water Pipeline	Rubidoux Community Services District
205	1207	0.185	Natural Treatment System Site 67	Irvine Ranch Water District
206	961	0.183	Rawlings Reservoir Replacement	City of Tustin
207	1192	0.183	Westminster Channel (OCFCD Facility No. C04) from downstream Bolsa Chica Street to upstream the intersection of Springdale Street and Edinger Avenue.	Orange County, Public Works, Flood Control Section, Flood Programs

208	1193	0.183	Westminster Channel (OCFCD Facility No. C04) from upstream the intersection of Springdale Street and Edinger Avenue to downstream Bolsa Avenue.	Orange County, Public Works, Flood Control Section, Flood Programs
209	1233	0.182	Rubidoux Community Services District Emergency Interconnections	Rubidoux Community Services District
210	995	0.179	Wilson III Basins Project and Wilson Basins/Spreading Grounds	City of Yucaipa
211	1282	0.178	Lane Channel (OCFCD Facility No. F08) from Confluence with F05 channel to Von Karman	Orange County, Public Works, Flood Control Section, Flood Programs
212	1285	0.178	Lane Channel (OCFCD Facility No. F08) from Von Karman to 1000' downstream Redhill Avenue	Orange County, Public Works, Flood Control Section, Flood Programs
213	1251	0.177	Fullerton Creek Channel (OCFCD Facility No. A03) from downstream Western Ave to downstream Beach Blvd.	Orange County, Public Works, Flood Control Section, Flood Programs
214	1267	0.177	Planning & Integration Assistance Program	California Resource Connections
215	1191	0.176	Ocean View Channel (OCFCD Facility No. C06) from downstream of Bushard Street to downstream of Brookhurst Street.	Orange County, Public Works, Flood Control Section, Flood Programs
216	978	0.174	Raymond Basin Enhancement Project	Orange County Water District
217	1209	0.174	Newland Storm Channel (OCFCD Facility No. C05S01) from Confluence with C05 channel to downstream McFadden Avenue.	Orange County, Public Works, Flood Control Section, Flood Programs

218	1074	0.173	Seven Oaks Dam and Reservoir Construction Area	San Bernardino Valley Municipal Water District
219	1076	0.173	Santa Ana River Construction Area	San Bernardino Valley Municipal Water District
220	1197	0.173	NEW 12-INCH RECYCLED WATER MAIN TO THE REDHILL GOLF COURSE	CUCAMONGA VALLEY WATER DISTRICT
221	1256	0.173	Carbon Creek Channel (OCFCD Facility No. B01) from upstream Beach Boulevard to upstream Dale Street.	Orange County, Public Works, Flood Control Section, Flood Programs
222	1225	0.172	PROPOSED 8-INCH REDHILL PARK LATERAL	CUCAMONGA VALLEY WATER DISTRICT
223	1093	0.17	1N09 Reconstruction and Water Quality Improvement	USDA Forest Service - San Bernardino National Forest
224	960	0.169	Prado Basin Sediment Management Demonstration Project	Orange County Water District
225	1114	0.168	Construction Circle Recycled Water Conversion Project	Irvine Ranch Water District
226	1210	0.168	Newland Storm Channel (OCFCD Facility No. C05S01) from downstream McFadden Avenue to downstream Bolsa Avenue	Orange County, Public Works, Flood Control Section, Flood Programs
227	1255	0.168	Carbon Creek Channel (OCFCD Facility No. B01) from upstream Orange to upstream Beach Boulevard.	Orange County, Public Works, Flood Control Section, Flood Programs
228	979	0.166	Placentia Basin Enhancement Project	Orange County Water District

229	1252	0.162	Fullerton Creek Channel (OCFCD Facility No. A03) from downstream Beach Blvd. including undercrossing to downstream I-5 Freeway.	Orange County, Public Works, Flood Control Section, Flood Programs
230	1253	0.162	Fullerton Creek Channel (OCFCD Facility No. A03) from downstream I-5 Freeway to downstream Dale Street.	a. Orange County, Public Works, Flood Control Section, Flood Programs
231	1254	0.162	Carbon Creek Channel (OCFCD Facility No. B01) from downstream Western Avenue to upstream Orange (including both undercrossings).	Orange County, Public Works, Flood Control Section, Flood Programs
232	1008	0.161	Recharge Water Sediment Removal Demonstration Project	Orange County Water District
233	1198	0.157	Active Recharge Project in the Tributaries of the Santa Ana River	San Bernardino Valley Municipal Water District
234	1159	0.156	University of California Irvine Water Use Efficiency Upgrades	Irvine Ranch Water District
235	1239	0.156	Perris Valley Recycled Water Distribution Pipeline Project	Eastern Municipal Water District
236	1014	0.154	Recharge Water Sediment Removal Project	Orange County Water District
237	1043	0.153	Platinum Triangle/ARTIC and Disneyland Resort Area Water Recycling Project	City of Anaheim
238	1297	0.153	Peters Canyon Channel (OCFCD Facility No. F06) from Barranca Parkway to Warner Avenue.	Orange County, Public Works, Flood Control Section, Flood Programs
239	1001	0.151	Temescal Creek Wetlands	Orange County Water District
240	1196	0.151	Citywide Street Median Rehabilitation Project	City of Garden Grove
241	1099	0.149	Ball Road Regional Recycled Water Project	City of Anaheim

242	1299	0.148	Santa Ana-Santa Fe Channel (OCFCD Facility No. F10) from confluence with Peters Canyon Channel to downstream Redhill Avenue.	Orange County, Public Works, Flood Control Section, Flood Programs
243	1257	0.146	Carbon Creek Channel (OCFCD Facility No. B01) from upstream Gilbert Street to downstream I-5 Freeway including B01P01 & B01B02	Orange County, Public Works, Flood Control Section, Flood Programs
244	1294	0.145	Peters Canyon Channel (OCFCD Facility No. F06) from Confluence with San Juan Creek Channel (F05) to downstream Barranca parkway.	Orange County, Public Works, Flood Control Section, Flood Programs
245	1228	0.143	PROPOSED 12-INCH VILLAGE OF HERITAGE	CUCAMONGA VALLEY WATER DISTRICT
246	1079	0.142	Lytle Creek Construction Area	San Bernardino Valley Municipal Water District
247	1224	0.138	Commercial, Industrial & Institutional Water Use Efficiency Upgrades	Irvine Ranch Water District
248	1289	0.132	Reservoir Management System at 5 Domestic Water Reservoirs	Irvine Ranch Water District
249	980	0.131	Santiago Basins Intertie	Orange County Water District
250	1042	0.131	Shallow Aquifer Pumping for Non-potable Uses	City of Anaheim
251	1292	0.13	Tustin Legacy Wells 1, 2, 3, and 4	Irvine Ranch Water District
252	1081	0.128	Surface Water Treatment Plant(s)	San Bernardino Valley Municipal Water District
253	1131	0.125	Recharge Basin Rehabilitation	Orange County Water District
254	1053	0.119	Mentone Pipeline	San Bernardino Valley Municipal Water District
255	1101	0.117	Orange County/Beaumont Conjunctive Use Water Project	City of Anaheim

256	1175	0.117	Yockey/Newland Storm Drain Line B-5 Phase 2	City of Garden Grove
257	1276	0.117	Santa Ana Gardens Channel (OCFCD Facility No. F02) from downstream Alton to Segerstrom.	Orange County, Public Works, Flood Control Section, Flood Programs
258	1070	0.113	Redlands Reservoir	San Bernardino Valley Municipal Water District
259	1304	0.111	San Bernardino Clean Water Factory – Phase III	City of San Bernardino Municipal Water Department
260	967	0.11	MTBE Interim Remediation	Orange County Water District
261	1027	0.107	Lytle Creek Turnout	San Bernardino Valley Municipal Water District
262	1078	0.107	Devil Canyon Construction Area	San Bernardino Valley Municipal Water District
263	1031	0.105	Central Feeder Pipeline	San Bernardino Valley Municipal Water District
264	1084	0.105	Alamitos Barrier Improvement Project	Orange County Water District
265	1061	0.102	Yucaipa Lakes Pipeline Replacement	San Bernardino Valley Municipal Water District
266	1029	0.101	PVRWRF Biosolids Dryer Facility	Eastern Municipal Water District
267	1100	0.1	RP-1 Cogeneration Facility Expansion	Inland Empire Utilities Agency
268	1121	0.1	RP-2 Cogeneration Facility Expansion	Inland Empire Utilities Agency
269	1148	0.1	Digester Gas Cleaning System	Inland Empire Utilities Agency
270	1161	0.1	RP-2 Digester Gas System Modifications	Inland Empire Utilities Agency

271	1044	0.099	Urban Runoff Reuse - Anaheim Hills Golf Course	City of Anaheim
272	1034	0.095	San Bernardino Pump Station #1	San Bernardino Valley Municipal Water District
273	1060	0.095	Baseline Feeder Pump Station (East and/or West ALternative)	San Bernardino Valley Municipal Water District
274	941	0.093	Construction of a Reclaimed Water Pipeline to Buena Park, California	City of Buena Park
275	1069	0.089	San Bernardino Reservoir	San Bernardino Valley Municipal Water District
276	1033	0.085	Biodiesel Feedstock Production	Eastern Municipal Water District
277	1030	0.084	Glen Helen Turnout	San Bernardino Valley Municipal Water District
278	1035	0.083	San Bernardino Pump Station #2	San Bernardino Valley Municipal Water District
279	1051	0.083	9th Street Feeder	San Bernardino Valley Municipal Water District
280	1052	0.083	South End Feeder	San Bernardino Valley Municipal Water District
281	1059	0.083	Baseline Feeder West Extension	San Bernardino Valley Municipal Water District
282	1067	0.083	City Creek Crossing	San Bernardino Valley Municipal Water District
283	1077	0.083	Morton Canyon Hydroelectric Generation Plant	San Bernardino Valley Municipal Water District
284	1058	0.082	DWR Pump Station Alternative 2	San Bernardino Valley Municipal Water District

285	1071	0.082	North Lake Project	San Bernardino Valley Municipal Water District
286	1150	0.082	RP-1 Secondary System Modifications	Inland Empire Utilities Agency
287	1127	0.081	Agency Wide Lighting Improvements	Inland Empire Utilities Agency
288	1183	0.074	Septic System Source Water Elimination Water Source Protection Project	Rubidoux Community Services District
289	1139	0.072	Subsurface Recharge	Orange County Water District
290	1010	0.07	Water Well Decontamination - City of Redlands	City of Redlands
291	1063	0.066	Yucaipa Connector	San Bernardino Valley Municipal Water District
292	1064	0.066	Orange Street Connector Pipeline	San Bernardino Valley Municipal Water District
293	1066	0.066	Alabama Street Well Field	San Bernardino Valley Municipal Water District
294	996	0.062	Patterson Street Storm Drain Upgrade	City of Garden Grove
295	1062	0.06	Yucaipa Lakes Pump Station	San Bernardino Valley Municipal Water District
296	1065	0.06	Alabama Street Connector Pipeline	San Bernardino Valley Municipal Water District
297	1068	0.06	Foothill Pipeline Enlargement	San Bernardino Valley Municipal Water District

OWOW STEERING COMMITTEE MEMORANDUM NO. 0004

DATE: August 26, 2010

TO: Steering Committee

SUBJECT: **Presentation of Project Portfolios for IRWMP Round 1 Funding**

PREPARED BY: Jeffrey Beehler, Program Manager

RECOMMENDATION

It is recommended that the OWOW Steering Committee direct staff to develop a project list for Prop 84, IRWMP Round 1 Funding based on portfolio preference.

DISCUSSION

The One Water One Watershed (OWOW) planning process received 297 projects. These projects were ranked based on weighted criteria as approved by the Steering Committee. When submitting projects, stakeholders provided project proposals ranging from “shovel ready” to those more conceptual in nature.

As part of Proposition 84, IRWMP, a total \$114 M is available to for the Santa Ana River Watershed to encourage the development and implementation of integrated regional projects. A grant application from SAWPA to the California Department of Water Resources is due in January, 2011 for Round 1. This round of funding will provide \$12 M and is anticipated to be available for use granting mid-2011.

Projects selected for this first round of funding will need to have at least 30% of design completed in order to complete the required economic analysis. For this reason, projects must be well developed. Highly ranked OWOW projects early in development may be accommodated in later rounds of funding of IRWMP, or by other funding sources more closely aligned to the project. Staff will develop several project portfolios, based on OWOW project prioritization list, project readiness, benefits to the watershed and available funding for Steering Committee’s consideration.

Projects included within portfolios will be vetted for data accuracy, technical, and financial feasibility. In addition, project proponents will provide detailed documentation substantiating the claims provided in the application. Because the Prop 84 IRWMP funding is limited, it is important that every effort to leverage be maximized. The projects proposed to be included in the selected portfolio will be evaluated during the interview process. Projects will be re-ranked should data be corrected in the project database.

The Steering Committee will determine allocation of available funding using the project portfolios and additional project information at their next meeting.

JB:pb

CM#0004 OWOW Project Portfolio 8-26-10

MEETING MINUTES

OWOW STEERING COMMITTEE

July 22, 2010

PARTICIPANTS PRESENT

Wyatt Troxel, Acting Convener
Garry Brown
Bill Campbell
Josie Gonzales
Beth Krom
Steve PonTell
Ali Sahabi

SAWPA
Orange County Coastkeeper
County of Orange, Supervisor
San Bernardino County, Supervisor
City of Irvine
Santa Ana Regional Water Board
SE Corporation

OTHERS PRESENT

Dan Rodrigo
Michael Delgado
Jerry Richards
Eric Tolles
Robert Ennis
Mark Tetterer
Bob Page
LeAnne Hamilton
Salvador Lopez
Celeste Cantú
Mark Norton
Jeff Beehler
Patti Bonawitz

Camp Dresser & McKee
County of San Bernardino/CAO
Townsend Public Affairs
City of Irvine
Orange County Water District
Irvine Ranch Water District
County of San Bernardino
Inland Empire Utilities Agency
Consultant
SAWPA
SAWPA
SAWPA
SAWPA

The Steering Committee Meeting was called to order at 4:21 p.m. by Acting Convener Wyatt Troxel at the Green River Golf Course located at 5215 Green River Road, Corona, CA, 92880. A quorum was present; however, Steering Committee members Marion Ashley, Ron Sullivan, Ali Sahabi, Pat Morris, and Ron Loveridge were noted as absent. There were no public comments received. At the request of Committee Member Bill Campbell, introductions were made by all in attendance (see list above).

To expedite the meeting agenda, Convener Troxel commented that staff presented Agenda Item 6 (Grant Opportunities - Informational Report) earlier to those members present, while the committee was waiting for a quorum to convene.

Approval of Minutes

Upon motion by Josie Gonzales, seconded by Garry Brown, the motion unanimously carried:

SC/10-07-01

MOVED, approval of the Minutes from the meeting held 6-3-10.

OWOW Update

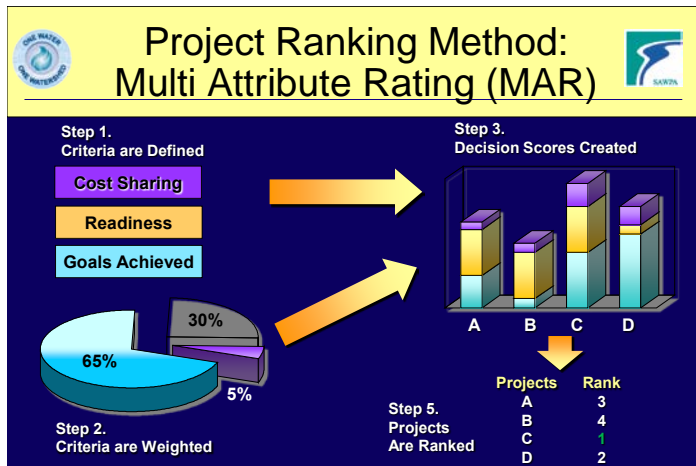
Jeff Beehler noted that the Proposition 84 schedule has slipped and that the release of the Proposition 84 final guidelines and Proposal Solicitation Package (PSP) now have been tentatively targeted for early August; the first PSP planning grant is due late September/early October; the second PSP implementation is January 2011; and the third PSP stormwater grant is targeted for March 2011. He also reviewed the new schedule for the first round of funding. We are waiting for the Department of Water Resources to finalize and release their final schedule.

TENTATIVE FIRST ROUND OF FUNDING SCHEDULE

Call for projects	June 30, 2010
Evaluate and rank projects	Mid-September, 2010
Finalize OWOW Plan	Mid-October, 2010
Public review	October – November, 2010
Adopt OWOW Plan	November, 2010
Rank projects for funding	September - October, 2010
Prepare grant applications	October, 2010 – January, 2011

Jeff Beehler stated that it costs between \$20,000 and \$30,000 to prepare each project submittal to the State. He also noted that 297 applications were received from 64 project sponsors for total project costs amounting to \$3.6 billion, with a funding request of \$1.7 billion. The master list of projects received was distributed. Discussion ensued regarding the limited resources and the numerous projects. Nearly 70% of the projects benefit more than one municipality or sub-watershed; 40% of the projects benefit disadvantage communities; 14% benefit tribal and disadvantage communities, and 20% of all project applications have final design or are shovel-ready.

Jeff Beehler then introduced Dan Rodrigo of CDM. Dan Rodrigo stated that the “multi-attribute rating” (MAR) process is a structured process for comparing projects that meet multiple objectives. MAR easily incorporates sensitivity in the weightings, as well as is transparent in displaying results. He discussed the ranking criteria, which includes: project readiness, cost match, cost effectiveness, active partnerships, water quality/salt management benefits, restoration/flood management benefits, watershed-focused recreation benefits, water supply benefits, resource efficient land use and impacts to natural hydrology, benefits to disadvantaged and Tribal communities, and greenhouse gas reduction/mitigation. There will be two rankings: the first ranking will evaluate all 297 project applications in accordance with the Plan itself. The second ranking will evaluate the “final design/shovel-ready” projects, which are responsive to Proposition 84, Chapter 2 requirements. He then presented three sample projects to demonstrate how these three project scenarios would stack up against the ranking criteria. The chart below reflects how the elements would be utilized with the software application.



Ali Sahabi entered the meeting room at 4:53 p.m.

Discussion ensued regarding the master projects list, MAR scoring (1-5, with 5 being the max); projects should align with our watershed goals, the importance of timely completion of projects, what makes a project viable, the importance to set standards within the watershed, and driving projects that respond to the 21st Century.

Upon motion by Steve PonTell, seconded by Josie Gonzales, the motion unanimously carried:

SC/10-07-02
MOVED, approval to receive and file the “Master List of Projects Received.”

Allocation of Proposition 84 Funds

Salvador Lopez stated that \$1.3 billion of the project applications are requesting the maximum grant contribution of 75%. He requested direction from the Steering Committee as to how to maximize the benefits to the watershed in

light of large number of projects submitted and the limited funding resources for this first round. He presented the following questions:

- Should we fund a few projects entirely, or provide less funding to more projects?
- How to balance project readiness for first round vs. project merit?
- Would projects be financially feasible with less grant funding?
- What is the impact on administrative costs?

Discussion ensued with much emphasis on the first two questions noted above.

Josie Gonzales commented, "...Unless we are willing to set our own desires aside and work together, we will undermine the very thing we are trying to build! Each of us has to make a commitment that this process will be open and transparent, and support the projects that are selected, even if they are not in our respective jurisdictional boundaries. ...I will support whoever else gets the project funding as they have gone through the process and have qualified because of the identified benefits it brings to our watershed."

Wyatt Troxel reminded all the Committee members that when OWOW got started, all of us were asked to check our identities at the door, and we will need to continue to do so as we make the hard decisions.

It was the consensus that the Committee that staff be directed to prepare conceptual scenarios of the high-ranking projects.

Bill Campbell left the meeting room at 5:31 p.m.

Project Readiness Discussion

This topic was briefly incorporated into the discussion above.

Announcements/Adjournment

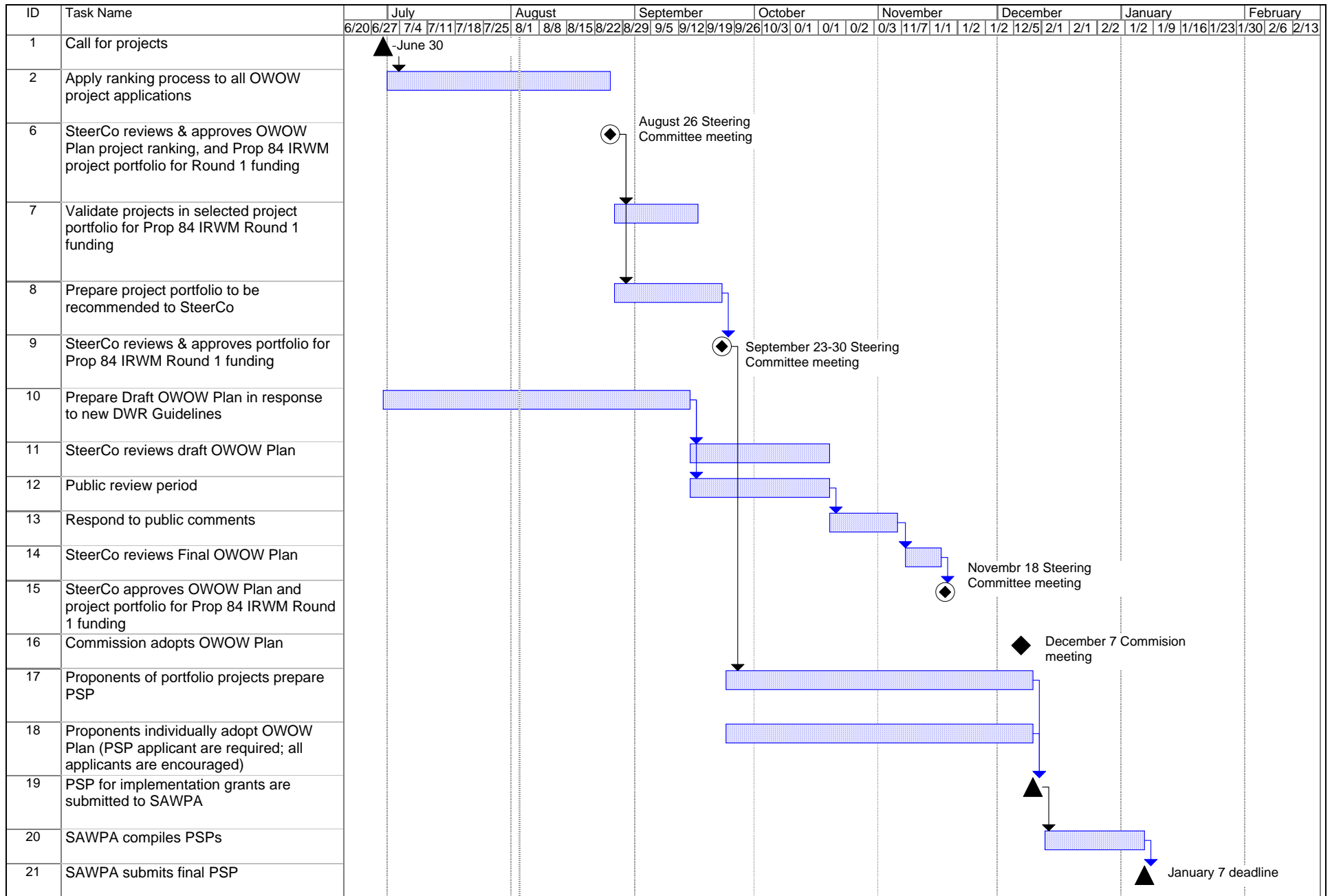
The next meeting will be September 23, 2010, at 4:00 p.m. There being no further business, Convener Troxel adjourned the meeting at 5:39 p.m.

Wyatt Troxel, Convener

APPROVED:

September 23, 2010

7-22-10 Min Rev



Project: 20100803 calendar Date: Tue 8/3/10	Task	[Task bar icon]	SAWPA Commission Meeting	◆
	Steering Committee Meeting	◆	Key milestones	▲