

# Proposition 1E: Stormwater Flood Management Grants



**Santa Ana Watershed Project Authority**  
**February 3, 2011**



# Introduction



- Self-Introductions
- OWOW and the Importance of Integrated Projects

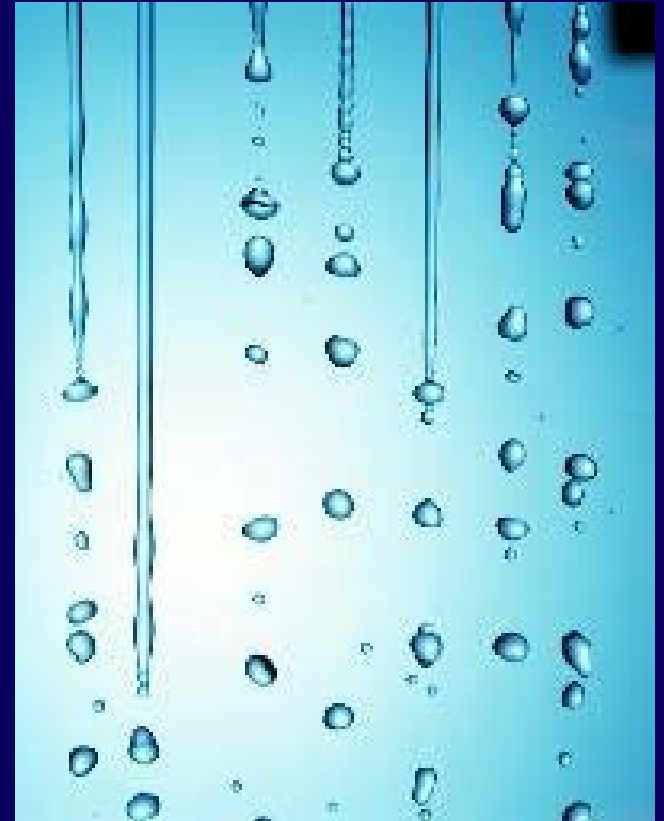




# What Kind of Water?

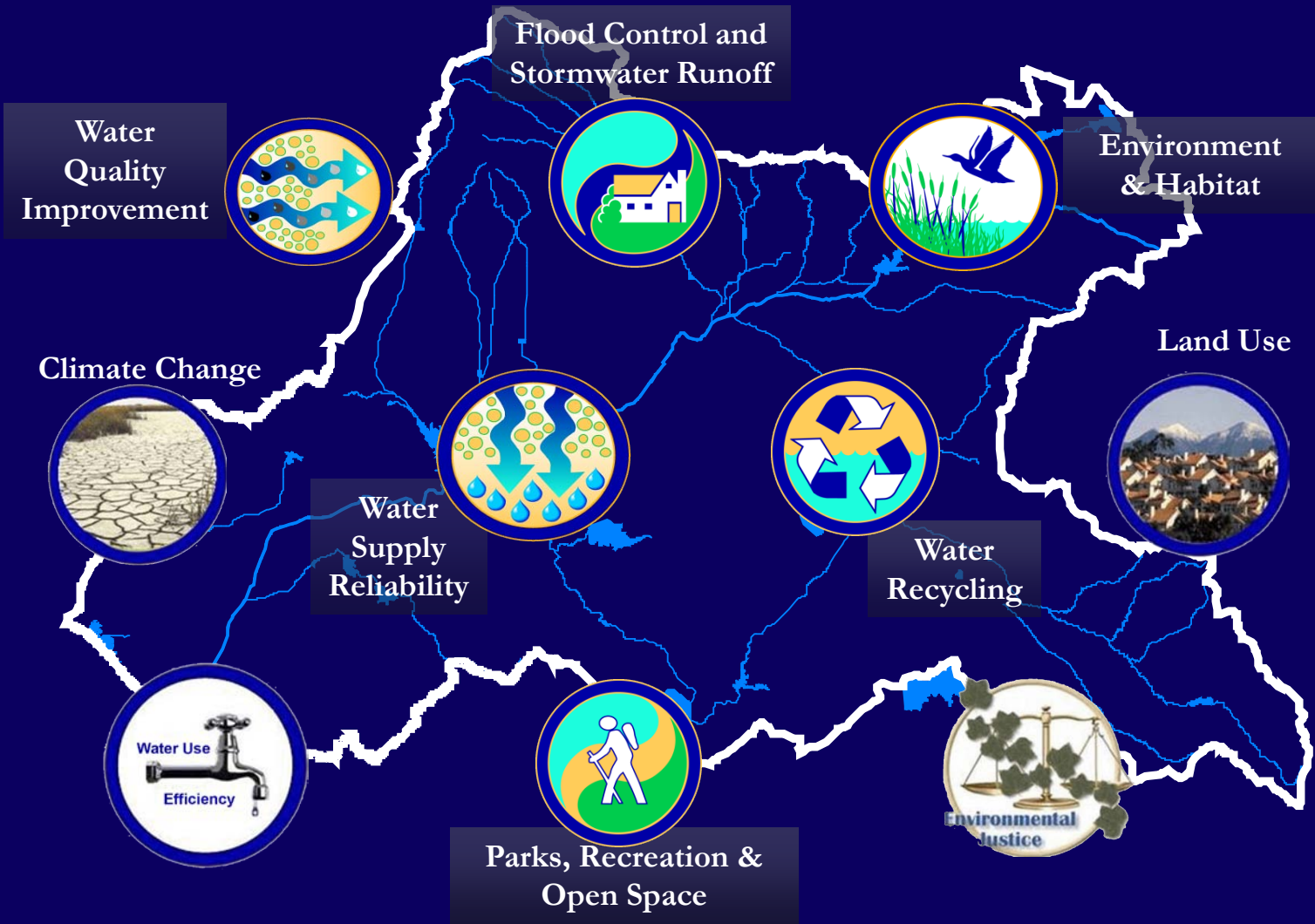


- Paper Water
- Storm Water
- Surface water
- Groundwater
- Wastewater
- Recycled water
- Environmental water
- Nuisance water





# Pillars: Integrate Complexity





# Components of Ideal Projects





# OWOW Guiding Principles



1

***Create Anew*** – OWOW shared vision and adopting a new water ethic



2

***Collaboration Across Boundaries*** – Citizens of watershed, multi-jurisdictional solutions



3

***Adopt Systems Approach*** – Problems are interrelated, seek synergies, create catalysts



# USGS Ark Storm Scenario



Chicago, 2011





# Four Horsemen of the Apocalypse



Climate Change

Reduced Water from Delta



Colorado River Basin Drought

Explosive Development & Population growth

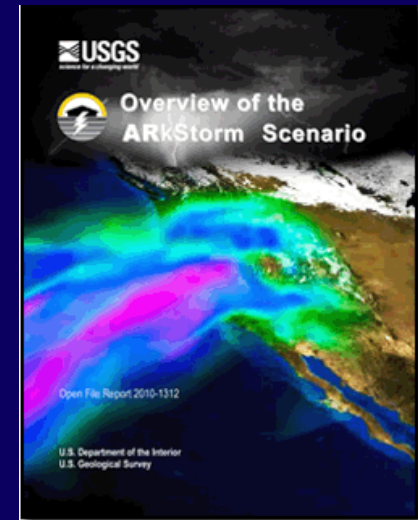


# A Fifth Horsemen?



## ArkStorm

- USGS scenario combining January 1969 and February 1986 storms back-to-back
- Based on updated predictive models
  - Updated climate scenarios
- Work of 200 meteorological and flood experts

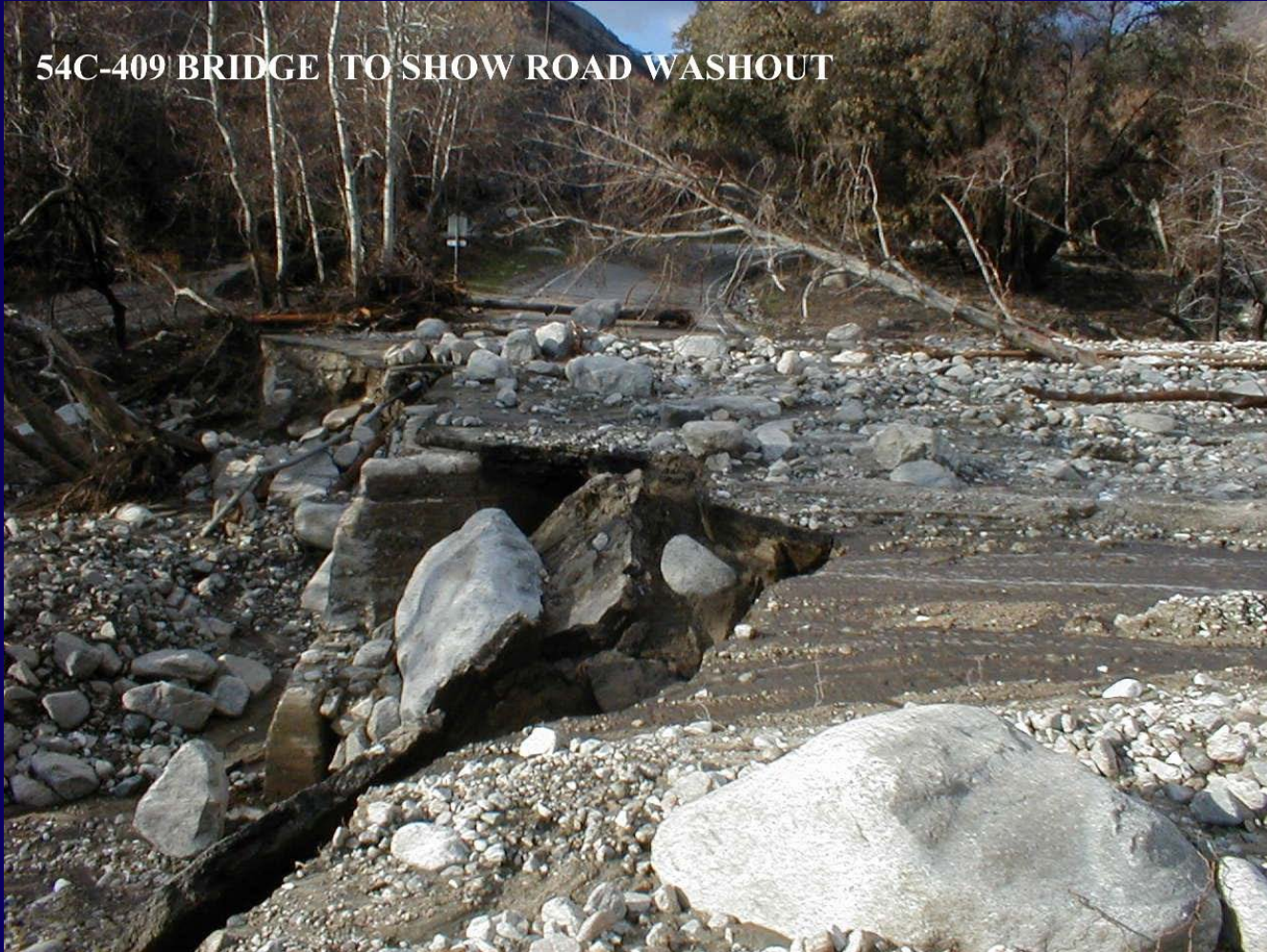




# Santa Ana Watershed: Flood Prone

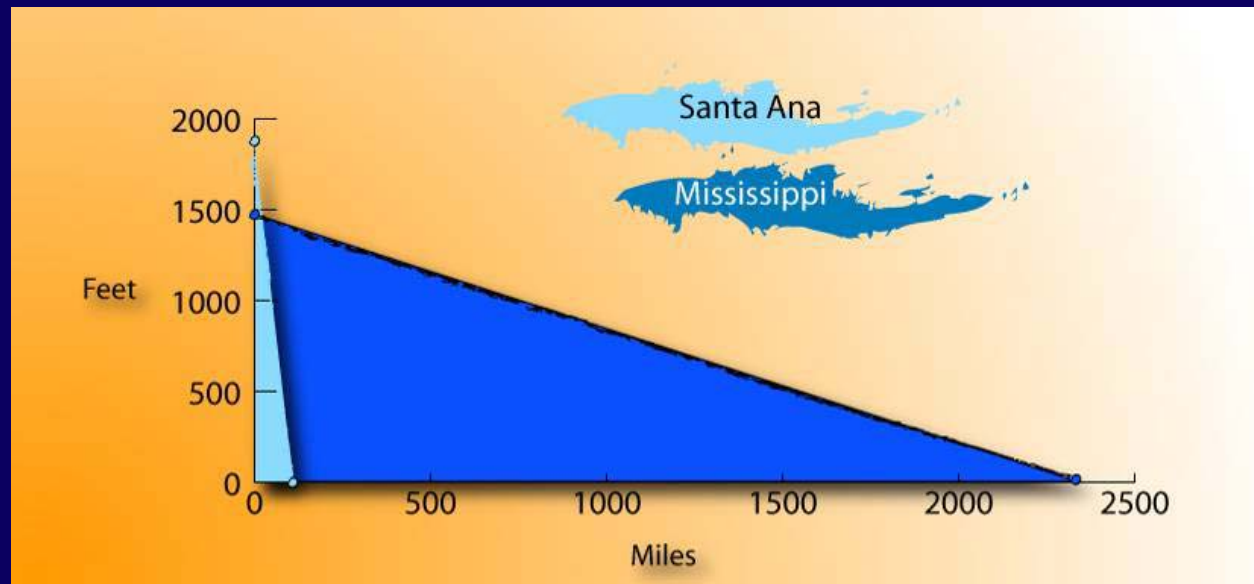


54C-409 BRIDGE TO SHOW ROAD WASHOUT





# Santa Ana vs. Mississippi



The Santa Ana River goes from 1,880 feet in elevation down to sea level in only 96 miles.

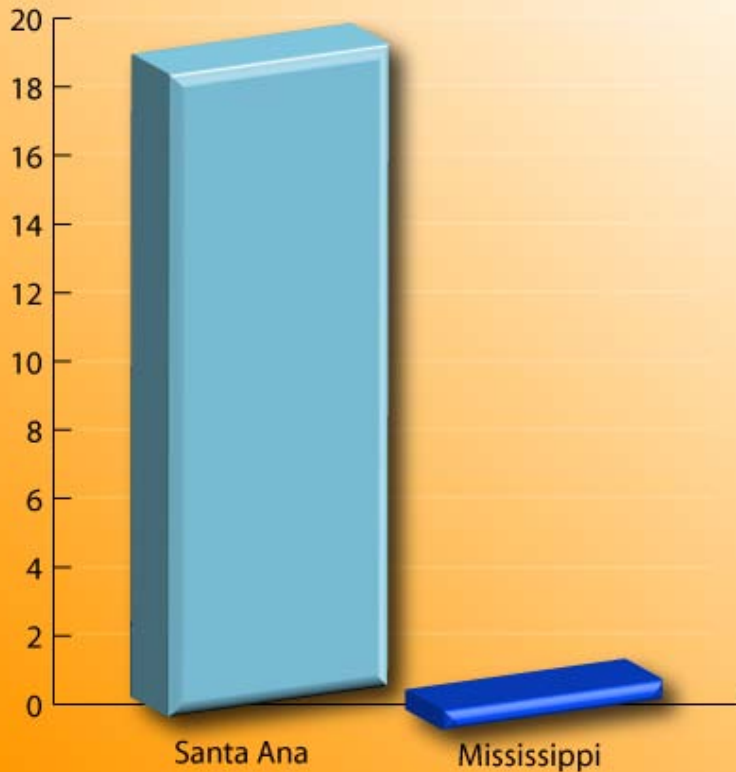
The Mississippi River goes from 1,475 feet in elevation down to sea level in 2,320 miles.



# Santa Ana vs. Mississippi



Drop in Feet per Mile



The Santa Ana River drops 19.5 feet in elevation per mile.

By comparison, the Mississippi River only drops 0.6 feet in elevation per mile.



# Flashy Flows





# Van Buren Bridge, 1969





# ArkStorm



Read more at:

<http://urbanearth.gps.caltech.edu/winter-storm/>

See the video:

<http://vimeo.com/19012969>

# Proposition 1 E

---





# Funding Available



\$212 M available statewide this round

- \$140 M- Specifically targeted

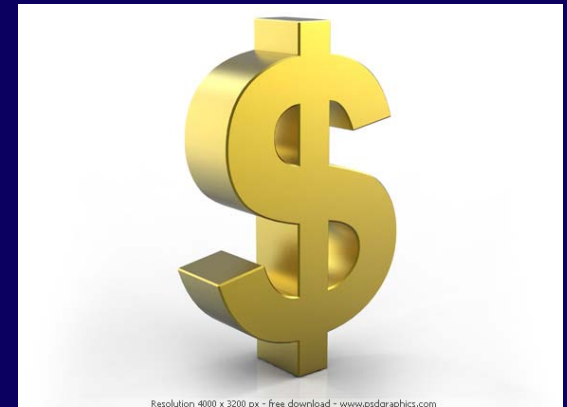




# Funding Available



- Competitive Process
- \$30 M maximum per project
- 50% Cost share





# Eligible Projects Must:



- Reduce flood damage
- Provide multiple benefits
  - Groundwater recharge
  - Water quality improvement
  - Ecosystem restoration
  - Reduction of erosion and sedimentation





# Eligible Projects Must:



- Be outside of the State Plan for Flood Control
- Comply with Santa Ana Regional Board Basin Plan
- Be consistent with adopted Integrated Regional Water Management (IRWM) plan and adopt IRWM plan as well
  - OWOW (Santa Ana IRWM) plan adopted by SAWPA Nov 2010
- Stormwater Resources Plan
  - OWOW Plan Compliance Memo





# SB2x-1 Legislative Targets



Out of the \$212 Million available statewide under this funding round:

- Group 1: Not less than \$100 M
  - Address immediate public health & a safety needs
  - Strengthen existing flood facilities to address seismic concerns
- Group 2: Not less than \$ 20 M
  - Related to combined sewer and stormwater systems
  - Meet immediate water quality needs
  - Prevent sewage discharge to State waters
- Group 3: Not less than \$ 20 M
  - Dedicated to urban stream stormwater flood management projects
  - Reduce frequency & impacts of flooding in watersheds that drain to SF bay



# SB855 Legislative Target



## Recent DWR Addendum to Prop 1E solicitation

- New funding target: Not less than \$ 15 M
  - Consistent with Stormwater Resources Plan
- OR
  - Consistent with an IRWM that includes Stormwater Resources Plan requirements (CWC 10562)

# OWOW Benefits



- OWOW Plan adopted November 2010
  - Includes 297 ranked projects
  - OWOW ranking does not influence competitiveness of Prop 1E Stormwater proposal
  - Plan is functional equivalent to Stormwater Resources Plan
- We've been focused on multi-benefit solutions



# Develop Local Water Resources



- Groundwater resources are key to our success in the Santa Ana Region
  - Increase natural recharge
  - Make use of imported water when available
- Must manage basin quality
  - Salt
  - Nitrogen





# Problem Focused



- Solutions are:
  - Structural (build something)
  - Institutional (do something)
  - Philosophical (water ethic)
- Collaborative Process important



# Lessons Learned

---



- Application is detailed and time consuming
- Documentation is extensive
- Economic analysis is difficult for many
  - Professional assistance helps
  
- Start Early!!!!

# Important Resources

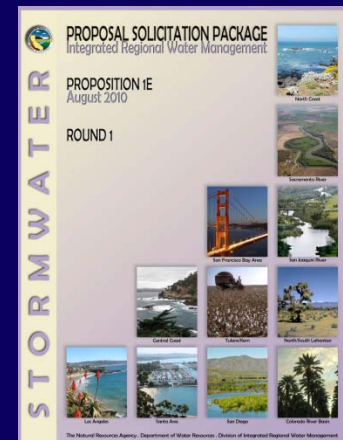


- DWR PSP

- [http://www.water.ca.gov/irwm/integregio\\_stormwaterflood.cfm](http://www.water.ca.gov/irwm/integregio_stormwaterflood.cfm)

- DWR resources library

- [http://www.water.ca.gov/irwm/integregio\\_resourceslinks.cfm](http://www.water.ca.gov/irwm/integregio_resourceslinks.cfm)



# Important Dates



- Full DWR application due- April 15
- DWR workshop- March 3
  - Alhambra/ Los Angeles
- Notify SAWPA in writing about proposed projects that are NOT in OWOW plan-  
March 1
- Bond Management System (BMS) Online-  
~~January 20~~ February

# OWOW Update

---



# OWOW Update



- Portfolio of Prop. 84 projects submitted
- Steering Committee reappointments
- Pillar Leader reappointments
- Bureau of Reclamation planning grant
  - Refinement of Scope
  - Tribal, EJ and Climate Change to be addressed more fully
  - Emphasis on developing regional solutions
  - Identify actions, not process

